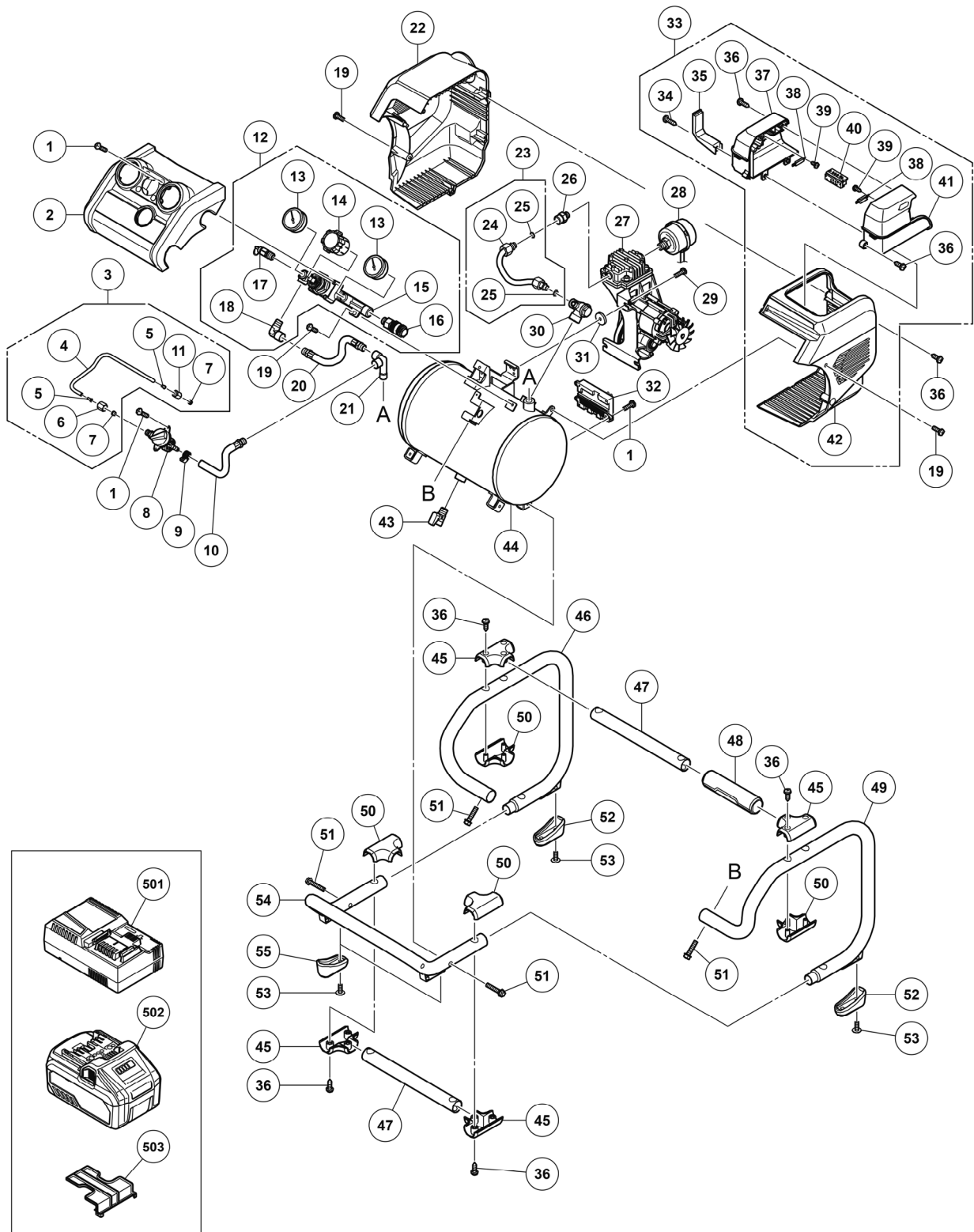


# Parts list

• Exploded assembly diagram of the Model EC 36DA



Item No.	Code No.	UPC	Description	No. used	Remarks
1	377703	887066250736	PAN HEAD SCREW M4	8	
2	377719	887066250903	FRONT PANEL	1	
3	377713	887066250835	UNLOADING PIPE ASS'Y	1	
4	377714	887066250842	UNLOADING TUBE	1	
5	377715	887066250859	UNLOAD TUBE INTERLINING	2	
6	377717	887066250873	NUT (B)	1	
7	377718	887066250897	COPPER RING	2	
8	377712	887066250828	3-IN-1 PRESSURE SWITCH	1	
9	377756	887066251276	HOSE BAND	1	
10	377711	887066250811	CONNECTING HOSE	1	
11	377716	887066250866	NUT (A)	1	
12	377721	887066250927	REGULATING VALVE ASS'Y	1	
13	377727	887066250989	PRESSURE GAUGE	2	
14	377725	887066250965	REGULATOR KNOB	1	
15	377722	887066250934	REGULATING VALVE	1	
16	377723	887066250941	QUICK COUPLING	1	
17	377726	887066250972	SAFETY VALVE	1	
18	377724	887066250958	ELBOW	1	
19	377720	887066250910	PAN HEAD SCREW M5	5	
20	377728	887066250996	HOSE ASS'Y	1	
21	377733	887066251047	THREE-WAY ELBOW	1	
22	377729	887066251009	HOUSING (A)	1	
23	377730	887066251016	PIPE ASS'Y	1	
24	377731	887066251023	EXHAUST PIPE	1	
25	377732	887066251030	O RING	2	
26	377735	887066251061	JOINT	1	
27	377702	887066250729	PUMP ASS'Y	1	
28	377736	887066251078	AIR CLEANER	1	
29	377738	887066251092	PAN HEAD SCREW M6	3	
30	377734	887066251054	CHECK VALVE	1	
31	377737	887066251085	PUMP RUBBER	3	
32	377704	887066250743	CONTROLLER	1	
33	377747	887066251184	HOUSING (B) ASS'Y	1	
34	377755	887066251269	SELF-TAPPING SCREW ST4.2 x 19	2	
35	377754	887066251252	SUPPORT PLATE	1	
36	377746	887066251177	SELF-TAPPING SCREW ST4.2 x 16	19	
37	377748	887066251191	BATTERY HOLDER (A)	1	
38	377749	887066251207	BATTERY PLATE	2	
39	377750	887066251214	SELF-TAPPING SCREW ST2.9	4	
40	377751	887066251221	BATTERY TERMINAL (REPAIR)	1	
41	377752	887066251238	BATTERY HOLDER (B)	1	
42	377753	887066251245	HOUSING (B)	1	
43	377706	887066250767	DRAIN VALVE	1	
44	377705	887066250750	TANK	1	
45	377742	887066251139	PIPE SLEEVE (B)	4	
46	377739	887066251108	LEFT FRAME	1	
47	377740	887066251115	CONNECTING PIPE	2	
48	377741	887066251122	HANDLE GRIP	1	
49	377744	887066251153	RIGHT FRAME	1	
50	377743	887066251146	PIPE SLEEVE (A)	4	
51	377707	887066250774	FLANGE BOLT M6	6	
52	377745	887066251160	RUBBER FOOT (REAR)	2	
53	377708	887066250781	FLANGE PAN HEAD SCREW M6	8	
54	377710	887066250804	FRONT FRAME	1	
55	377709	887066250798	RUBBER FOOT (FRONT)	2	
501	—		CHARGER (MODEL UC 18YSL3)	1	
502	372121M		BATTERY BSL 36B18 (USA, CAN)	1	
503	329897		BATTERY COVER	1	
601	378154	887066256318	ADHESIVE (HUAHUI H272)	1	
602	378155	887066256325	ADHESIVE (KAFUTER K-1668)	1	