

HIKOKI

CORDLESS CIRCULAR SAW C3606DPA

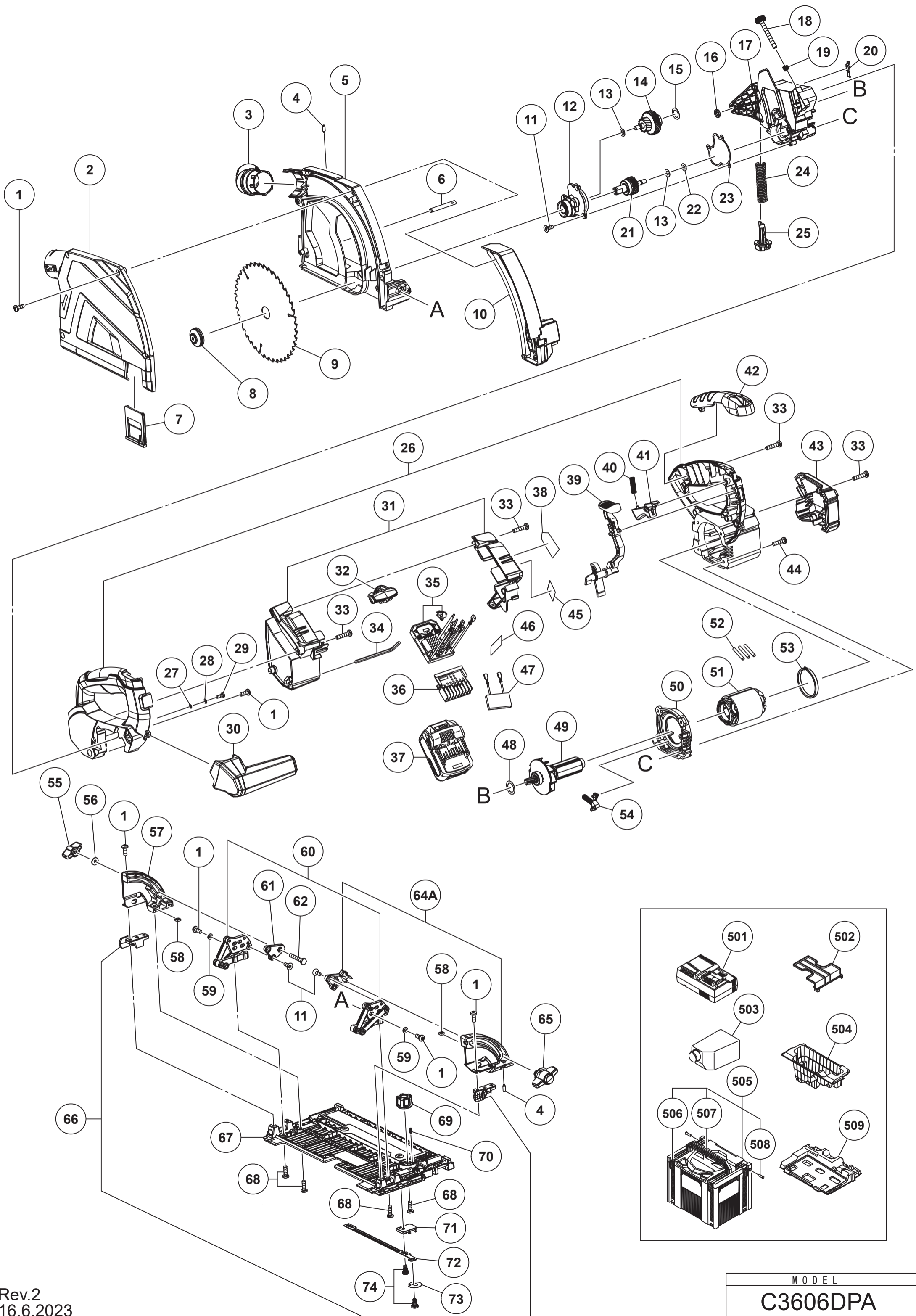
Item No.	Code No.	Description	No. Used	Remarks
1	379611	FILLISTER HEAD SCREW M4X10	15	
*2	379612	SAW COVER	1	
3	379613	EXHAUST NOZZLE	1	
4	379618	FITTING SCREW M4X12	3	
5	379615	SAW HOUSING	1	
6	379617	CYLINDRICAL PIN	1	
7	379614	EYE SHIELD	1	
8	379630	FLANGE SET	1	
*9	378834	SAW BLADE	1	
*10	379616	DEPTH SCALE	1	
11	379631	COUNTERSUNK SCREW M4X10	7	
12	379632	GEAR BOX COVER	1	
13	379635	WASHER	2	
14	379636	INTERMEDIATE PULLEY	1	
15	379638	WASHER	1	
16	379639	SPACING WASHER	1	
17	379640	GEAR HOUSING	1	
18	379641	SELECTOR	1	
19	379642	PRESSURE SPRING	1	
20	379643	SPRING	1	
21	379634	OUTPUT SHAFT	1	
22	379637	CUP SPRING	1	
23	379633	GEAR GASKET	1	
24	379619	PRESSURE SPRING	1	
25	379620	ARBOR	1	
26	379647	SUPPORT HANDLE SET	1	
27	379625	LOCK WASHER	1	
28	379626	WASHER	1	
29	379627	FILLISTER HEAD SCREW M3X8	1	
30	379656	SIDE SUPPORT HANDLE	1	
31	379621	BATTERY HOUSING	1	
32	379623	SELECTOR WHEEL	1	
33	379622	SELF-TAP FILL H SCREW ST4.2X19	10	
34	379629	HEXAGONAL KEY	1	
35	379624	ELECTRONIC UNIT	1	
36	379931	BATTERY TERMINAL	1	
39	379650	RELEASE BUTTON	1	
40	379648	PRESSURE SPRING	1	
41	379649	SWITCH TRIGGER	1	
42	379652	HANDLE ELEMENT	1	
*43	379657	MOTOR CAP	1	
44	379646	FILLISTER HEAD SCREW M4X16	4	
45		MV LABEL (A)	1	
47	379628	FUSE	1	
48	379651	SHIM	1	
49	361209	ARMATURE	1	
50	379645	BAFFLE	1	
51	341149	STATOR	1	
52	379653	SHRINK HOSE	3	
53	379654	SPACER RING	1	
54	379644	SPINDLE STOP	1	
55	379670	THUMB NUT (A)	1	
56	379671	WASHER	1	

* ALTERNATIVE PARTS

HIKOKI**CORDLESS CIRCULAR SAW C3606DPA**

Item No.	Code No.	Description	No. Used	Remarks
57	379672	CONSOLE (A)	1	
58	379673	SQUARE NUT	4	
59	379669	WASHER	4	
60	379668	SWIVEL PART	1	
61	379674	GUIDE ANGLE (A)	1	
62	379675	HEXAGON SCREW M4X25	1	
64A	380897	CONSOLE (B) SET	1	
65	379678	THUNB NUT (B)	1	
66	379665	CLAMPING DEVICE	1	
67	379664	BASE PLATE	1	
68	379662	FILLISTER HEAD SCREW M4X12.1	8	
69	379666	CONTROL KNOB	1	
70	379667	INDEX BOLT	1	
71	379661	ADJUSTING BODY	2	
72	379686	CONNECTING PIECE	1	
73	379660	COVER PLATE	1	
74	379659	FITTING SCREW M4X3.65	3	
		OPTIONAL ACCESSORIES		
*601	379259	CARRIER BAG	1	
*602	380150	DUST BAG SET	1	EXCEPT FOR USA,CAN
*603	379264	MITER FENCE	1	
*604		RIP FENCE (PARALLEL GUIDE) (4100082)	1	
*605		CONNECTOR (4100080)	1	
*606		GUIDE RAIL GR800 (4100071)	1	
				EXCEPT FOR USA,CAN
*607		GUIDE RAIL GR1600 (4100072)	1	

* ALTERNATIVE PARTS



MODEL
C3606DPA