

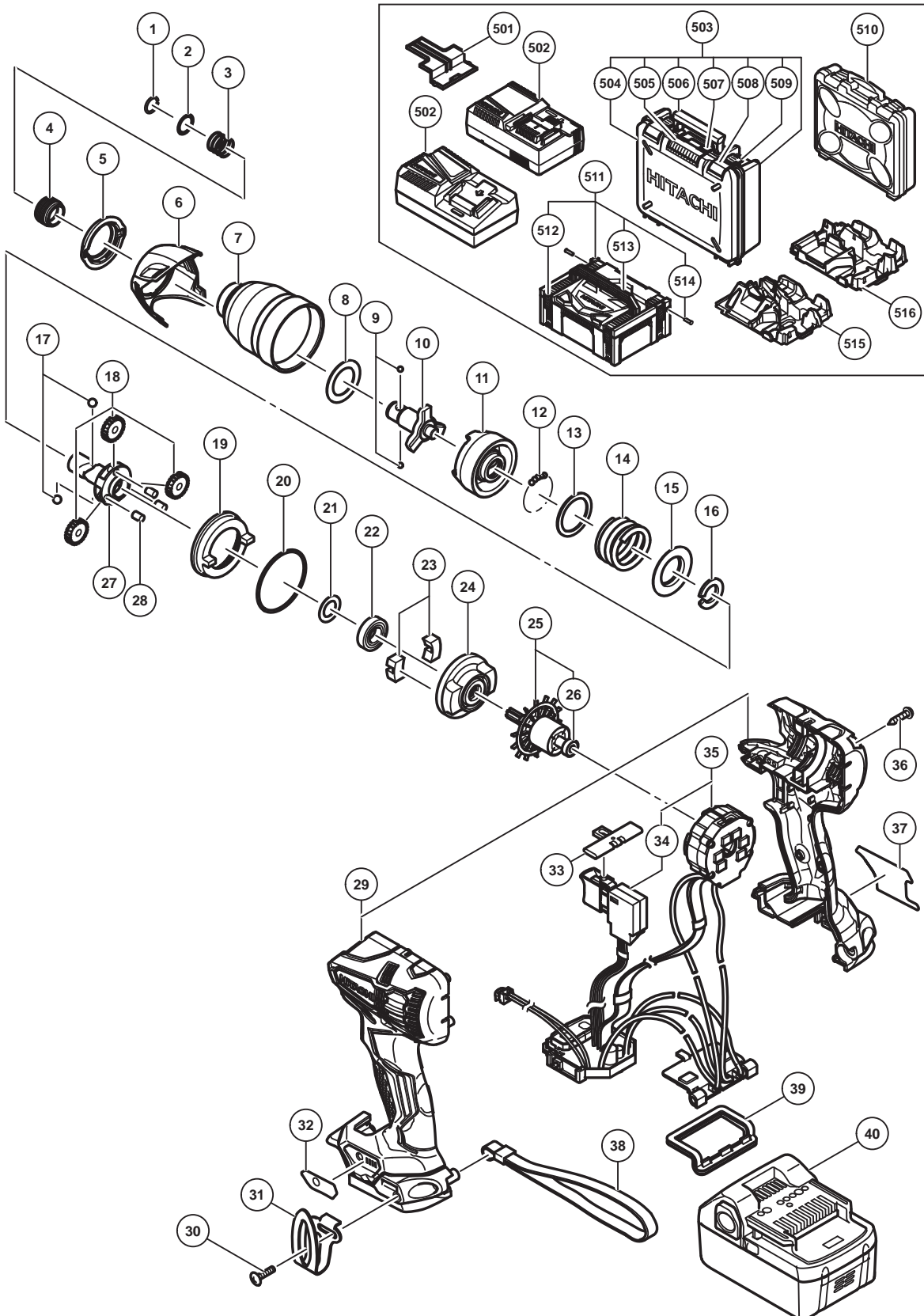
ELECTRIC TOOL PARTS LIST

■ CORDLESS IMPACT DRIVER

2016-10-19

Model WH 18DBDL2

(E1)



PARTS

WH 18DBDL2

| ITEM NO. | CODE NO. | DESCRIPTION | NO. USED | REMARKS |
|----------|----------|-------------------------------------------|----------|-----------------------------|
| 1 | 330619 | RETAINING RING | 1 | |
| 2 | 330856 | WASHER (D) | 1 | |
| 3 | 370581 | GUIDE SPRING | 1 | |
| 4 | 339350 | GUIDE SLEEVE | 1 | |
| 5 | 339198 | FRONT CAP | 1 | |
| 6 | 370575 | PROTECTOR | 1 | |
| 7 | 370578 | HAMMER CASE | 1 | |
| 8 | 370579 | WASHER (F) | 1 | |
| 9 | 319535 | STEEL BALL D3.5 (10 PCS.) | 2 | |
| * 10 | 370570 | ANVIL (S) | 1 | |
| * 10 | 370571 | ANVIL (L) | 1 | FOR CHN,TPE,UAE,THA,IND,KOR |
| 11 | 339192 | HAMMER | 1 | |
| 12 | 959148 | STEEL BALL D3.175 (10 PCS.) | 28 | |
| 13 | 370580 | WASHER (J) | 1 | |
| 14 | 339194 | HAMMER SPRING | 1 | |
| 15 | 316172 | WASHER (S) | 1 | |
| 16 | 370582 | STOPPER | 1 | |
| 17 | 959154 | STEEL BALL D5.556 (10 PCS.) | 2 | |
| 18 | 370584 | IDLE GEAR SET (3 PCS.) | 3 | |
| 19 | 370160 | RING GEAR | 1 | |
| 20 | 983852 | O-RING (S-42) | 1 | |
| 21 | 370583 | WASHER (E) | 1 | |
| 22 | 6901VV | BALL BEARING 6901VV | 1 | |
| 23 | 333952 | DAMPER | 2 | |
| 24 | 335317 | INNER COVER (E) | 1 | |
| 25 | 361046 | ROTOR PINION ASS'Y | 1 | INCLUD.26 |
| 26 | 335723 | BALL BEARING 604DD | 2 | |
| 27 | 339193 | SPINDLE | 1 | |
| 28 | 370585 | NEEDLE ROLLER | 3 | |
| 29 | 370572 | HOUSING (A).(B) SET | 1 | |
| 30 | 327001 | TRUSS HD. SCREW M4 (BLACK) | 1 | |
| 31 | 336372 | HOOK | 1 | |
| 32 | 370573 | PANEL SHEET (EX) | 1 | |
| 33 | 324225 | PUSHING BUTTON (B) | 1 | |
| 34 | 339217 | DC-SPEED CONTROL SWITCH | 1 | |
| 35 | 370577 | WIRING ASS'Y | 1 | INCLUD.34 |
| 36 | 313687 | TAPPING SCREW (W/FLANGE) D3 X 16 (BLACK) | 9 | |
| 37 | | NAME PLATE | 1 | |
| 38 | 306952 | STRAP (BLACK) | 1 | |
| 39 | 370728 | TERMINAL RUBBER (A) | 1 | |
| * 40 | 339782 | BATTERY BSL 1830C (USA,CAN) | 2 | INCLUD.501 |
| * 40 | 330068 | BATTERY BSL 1830 (EUROPE,AUS,NZL) | 2 | INCLUD.501 |
| * 40 | 336690 | BATTERY BSL 1830 (THA) | 2 | INCLUD.501 |
| * 40 | 334729 | BATTERY BSL 1830 (TPE) | 2 | INCLUD.501 |
| * 40 | 336385 | BATTERY BSL 1850 (EUROPE,AUS,NZL)(2 PCS.) | 2 | INCLUD.501 |
| * 40 | 370739 | BATTERY BSL 1850 (KOR) | 2 | INCLUD.501 |
| * 40 | 338892 | BATTERY BSL 1860 (EUROPE,AUS,NZL)(2 PCS.) | 2 | INCLUD.501 |
| * 40 | 338890 | BATTERY BSL 1860 (USA,CAN) | 2 | INCLUD.501 |
| * 40 | 370738 | BATTERY BSL 1860 (CHN) | 2 | INCLUD.501 |
| * 40 | 338891 | BATTERY BSL 1860 (EUROPE,AUS,NZL) | 2 | INCLUD.501 |

PARTS

WH 18DBDL2

| ITEM NO. | CODE NO. | DESCRIPTION | NO. USED | REMARKS |
|----------|----------|-----------------------------------|----------|------------|
| * 40 | 335790 | BATTERY BSL 1850 (EUROPE,AUS,NZL) | 2 | INCLUD.501 |
| | | | | |
| | | | | |
| | | | | |

STANDARD ACCESSORIES

| ITEM NO. | CODE NO. | DESCRIPTION | NO. USED | REMARKS |
|----------|----------|---------------------------|----------|-----------------------------------|
| 501 | 329897 | BATTERY COVER | 1 | |
| * 502 | | CHARGER (MODEL UC 18YFSL) | 1 | |
| * 502 | | CHARGER (MODEL UC 18YSL3) | 1 | |
| * 503 | 370700 | CASE ASS'Y | 1 | INCLUD.504-509 FOR USA,CAN |
| * 504 | 339210 | COVER (A) | 1 | FOR USA,CAN |
| * 505 | 339212 | CENTER LATCH | 1 | FOR USA,CAN |
| * 506 | 339211 | HANDLE (A) | 1 | FOR USA,CAN |
| * 507 | 339213 | CENTER KNOB | 1 | FOR USA,CAN |
| * 508 | 339215 | SIDE KNOB | 2 | FOR USA,CAN |
| * 509 | 339214 | SIDE LATCH | 2 | FOR USA,CAN |
| * 510 | 337852 | CASE | 1 | EXCEPT FOR EUROPE,GBR,AUS,USA,CAN |
| * 511 | 336471 | CASE ASS'Y (STACKABLE 2) | 1 | INCLUD.512-514 FOR EUROPE,GBR,AUS |
| * 512 | 336472 | LATCH | 4 | FOR EUROPE,GBR,AUS |
| * 513 | 336473 | HANDLE | 1 | FOR EUROPE,GBR,AUS |
| * 514 | 336474 | HINGE | 2 | FOR EUROPE,GBR,AUS |
| * 515 | 339776 | INNER TRAY | 1 | FOR GBR |
| * 516 | 336475 | INNER TRAY | 1 | FOR EUROPE,AUS |
| | | | | |
| | | | | |

OPTIONAL ACCESSORIES

| ITEM NO. | CODE NO. | DESCRIPTION | NO. USED | REMARKS |
|----------|----------|-----------------------------------|----------|------------------------------------|
| * 601 | 992671 | + DRIVER BIT (B) NO.2 50L | 1 | EXCEPT FOR CHN,TPE,UAE,THA,IND,KOR |
| * 602 | 992672 | + DRIVER BIT (B) NO.3 50L | 1 | EXCEPT FOR CHN,TPE,UAE,THA,IND,KOR |
| * 603 | 983006 | + DRIVER BIT NO.2 65L | 1 | FOR CHN,TPE,UAE,THA,IND,KOR |
| * 604 | 983011 | + DRIVER BIT NO.3 65L | 1 | FOR CHN,TPE,UAE,THA,IND,KOR |
| 605 | 321823 | DRILL CHUCK AND ADAPTER SET | 1 | INCLUD.606,607 |
| 606 | 987575 | CHUCK WRENCH FOR 10VLB-D,10VLR-D | 1 | |
| 607 | 307543 | CHUCK ADAPTER | 1 | |
| 608 | 306927 | SILICONE RUBBER | 1 | |
| 609 | 309922 | GREASE (ATTOLUB MS NO.2) 500G | 1 | |
| 610 | 325149 | GREASE (MOLUB-ALLOY NO.777-1) 75G | 1 | |
| | | | | |
| | | | | |