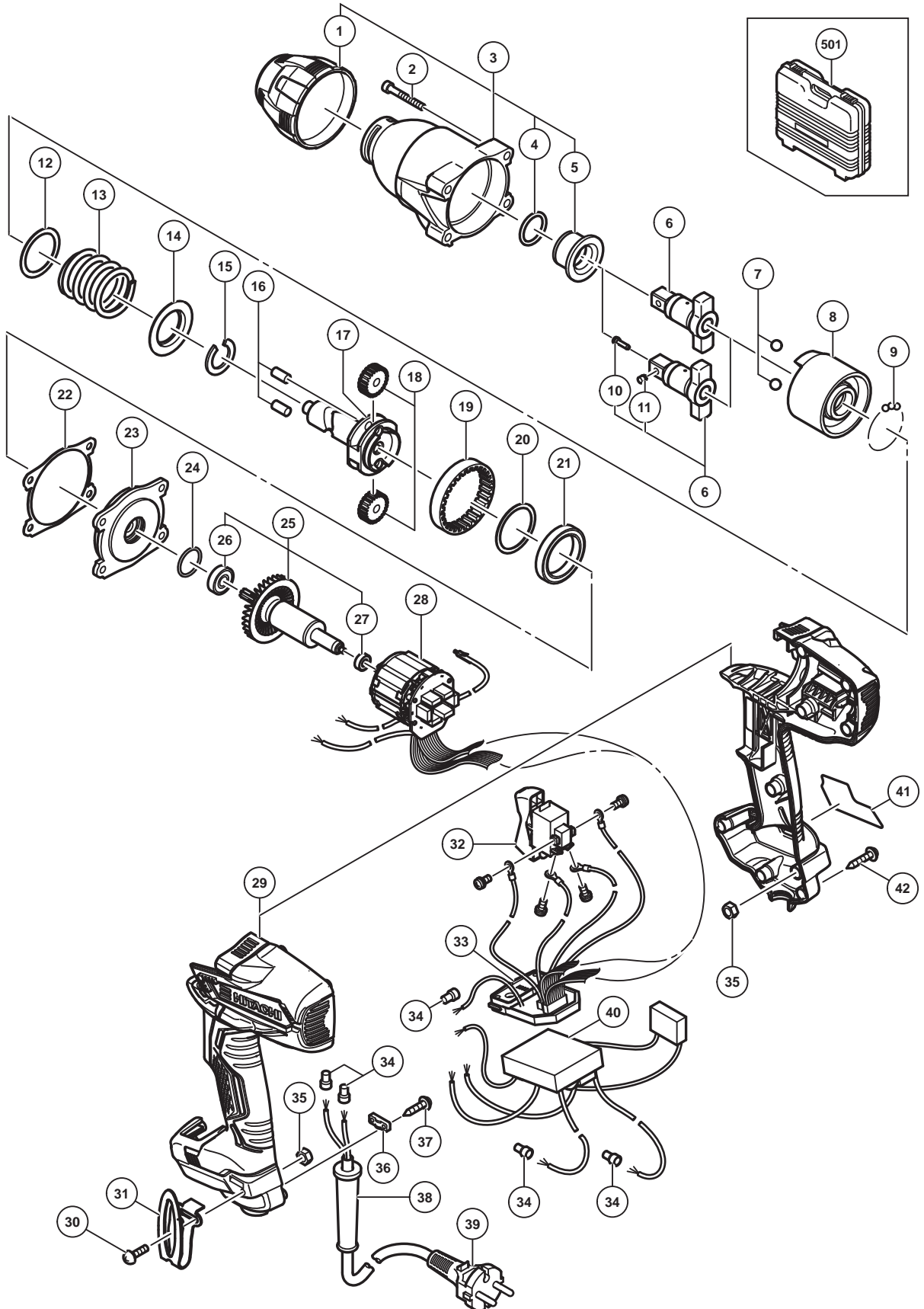


ELECTRIC TOOL PARTS LIST

■ **IMPACT WRENCH**
Model WR 16SE

2014-9-10
(E1)



PARTS

WR 16SE

ITEM NO.	CODE NO.	DESCRIPTION	NO. USED	REMARKS
1	337721	BUMPER (A)	1	
2	323753	SEAL LOCK HEX. SOCKET HD. BOLT M5 X 35	4	
3	337195	HAMMER CASE ASS'Y	1	INCLUD.1,4,5
4	318704	O-RING (M)	1	
5	323766	METAL	1	
*	6	334341	1	ANVIL (L) TYPE FOR W/O PLUNGER(A),PIN RETAINER(A)
*	6	334342	1	ANVIL (L) ASS'Y INCLUD.10,11 TYPE FOR W/PLUNGER (A), PIN RETAINER (A)
7	959150	STEEL BALL D6.35 (10 PCS.)	2	
8	337197	HAMMER (A)	1	
9	959155	STEEL BALL D3.97 (10 PCS.)	29	
*	10	323542	1	PIN RETAINER (A) FOR FRA,FRG,ESP,ITA,RUS,USA,CAN
*	11	323541	1	PLUNGER (A) FOR FRA,FRG,ESP,ITA,RUS,USA,CAN
12	317525	WASHER (B)	1	
13	337198	HAMMER SPRING (A)	1	
14	317521	WASHER (A)	1	
15	337201	STOPPER (A)	1	
16	985169	NEEDLE ROLLER	2	
17	337196	SPINDLE (A)	1	
18	323785	IDLE GEAR SET (2 PCS.)	2	
19	323786	RING GEAR	1	
20	337199	WASHER (C)	1	
21	337733	BALL BEARING 6807	1	
22	337698	PACKING (A)	1	
23	337200	INNER COVER (A)	1	
24	887302	O-RING (I.D 21.5)	1	
25	337203	ROTOR ASS'Y	1	INCLUD.26,27
26	608DDM	BALL BEARING 608DDC2PS2L	1	
27	333784	BALL BEARING 624DD	1	
*	28	340881	1	STATOR IGBT PCB 100V-120V
*	28	340882	1	STATOR IGBT PCB 220V-240V
29	337734	HOUSING (A).(B) SET	1	
30	327001	TRUSS HD. SCREW M4 (BLACK)	1	
31	335724	HOOK	1	
32	337202	SWITCH	1	
*	33	337700	1	CONTROLLER (A) 110V
*	33	337701	1	CONTROLLER (A) 120V
*	33	337702	1	CONTROLLER (A) 220V-230V
*	33	337703	1	CONTROLLER (A) 240V
34	959140	CONNECTOR 50091 (10 PCS.)	5	
35	327002	LOCK NUT M4 (BLACK)	2	
36	937631	CORD CLIP	1	
37	984750	TAPPING SCREW (W/FLANGE) D4 X 16	2	
*	38	953327	1	CORD ARMOR D8.8
*	38	938051	1	CORD ARMOR D10.1
*	39	500247Z	1	CORD (CORD ARMOR D8.8)
*	39	500439Z	1	CORD (CORD ARMOR D8.8) FOR AUS,NZL
*	39	500240Z	1	CORD (CORD ARMOR D8.8) FOR USA,CAN
*	39	500450Z	1	CORD (CORD ARMOR D8.8) FOR GBR (230V)
*	39	500461Z	1	CORD (CORD ARMOR D8.8) FOR GBR (110V)

OPTIONAL ACCESSORIES

WR 16SE

ITEM NO.	CODE NO.	DESCRIPTION	NO. USED	REMARKS
601		CORNER ATTACHMENT EW-14R	1	INCLUD.602-618
602	955300	HOUSING	1	
603	955301	METAL	3	
604	955302	SPINDLE	1	
605	945251	HITACHI LABEL	1	
606	955303	BEARING RACE	2	
607	955304	NEEDLE THRUST BEARING (NTA-1413)	2	
608	955305	COVER	1	
609	955306	NEEDLE BEARING (NTN BK1012)	1	
610	948227	RETAINING RING FOR D47 HOLE	1	
611	955307	PINION	1	
612	955308	SLEEVE	1	
613	955309	WASHER	1	
614	955310	SOCKET COVER	1	
615	955311	SOCKET	1	
616	303247	SEAL LOCK HEX. SOCKET HD. BOLT M5 X 25	6	
617	873537	SOCKET PIN	1	
618	873187	O-RING (J1SW1516)	1	
619	986062	UNIVERSAL JOINT ASS'Y	1	INCLUD.620,621
620	873537	SOCKET PIN	1	
621	873187	O-RING (J1SW1516)	1	
622	873536	HEX. SOCKET ASS'Y 17MM X 32L	1	INCLUD.620,621
623	873624	HEX. SOCKET ASS'Y 19MM X 34L	1	INCLUD.620,621
624	873626	HEX. SOCKET ASS'Y 21MM X 36L	1	INCLUD.620,621
625	873627	HEX. SOCKET ASS'Y 22MM X 40L	1	INCLUD.620,621
626	873628	HEX. SOCKET ASS'Y 23MM X 40L	1	INCLUD.620,621
627	873629	HEX. SOCKET ASS'Y 24MM X 40L	1	INCLUD.620,621
628	873630	HEX. SOCKET ASS'Y 26MM X 40L	1	INCLUD.620,621
629	985195	HEX. SOCKET ASS'Y 27MM X 40L	1	INCLUD.620,621
630	985196	HEX. SOCKET ASS'Y 30MM X 50L	1	INCLUD.620,621
631	873633	EXTENSION BAR ASS'Y (SQUARE) 12.7MM X 100L	1	INCLUD.620,621
632	955138	HEX. SOCKET ASS'Y (LONG) 12MM X 52L	1	INCLUD.620,621
633	955139	HEX. SOCKET ASS'Y (LONG) 13MM X 52L	1	INCLUD.620,621
634	955140	HEX. SOCKET ASS'Y (LONG) 14MM X 52L	1	INCLUD.620,621
635	955141	HEX. SOCKET ASS'Y (LONG) 17MM X 52L	1	INCLUD.620,621
636	955142	HEX. SOCKET ASS'Y (LONG) 19MM X 52L	1	INCLUD.620,621
637	955143	HEX. SOCKET ASS'Y (LONG) 21MM X 52L	1	INCLUD.620,621
638	955144	HEX. SOCKET ASS'Y (LONG) 22MM X 52L	1	INCLUD.620,621
639	955146	HEX. SOCKET ASS'Y (LONG) 24MM X 52L	1	INCLUD.620,621
640	955149	HEX. SOCKET ASS'Y (LONG) 17MM X 75L	1	INCLUD.620,621
641	955150	HEX. SOCKET ASS'Y (LONG) 19MM X 75L	1	INCLUD.620,621
642	955151	HEX. SOCKET ASS'Y (LONG) 21MM X 75L	1	INCLUD.620,621
643	955147	HEX. SOCKET ASS'Y (LONG) 26MM X 75L	1	INCLUD.620,621
644	985197	HEX. SOCKET ASS'Y (LONG) 30MM X 75L	1	INCLUD.620,621
645	955153	UNIVERSAL JOINT PIN	1	