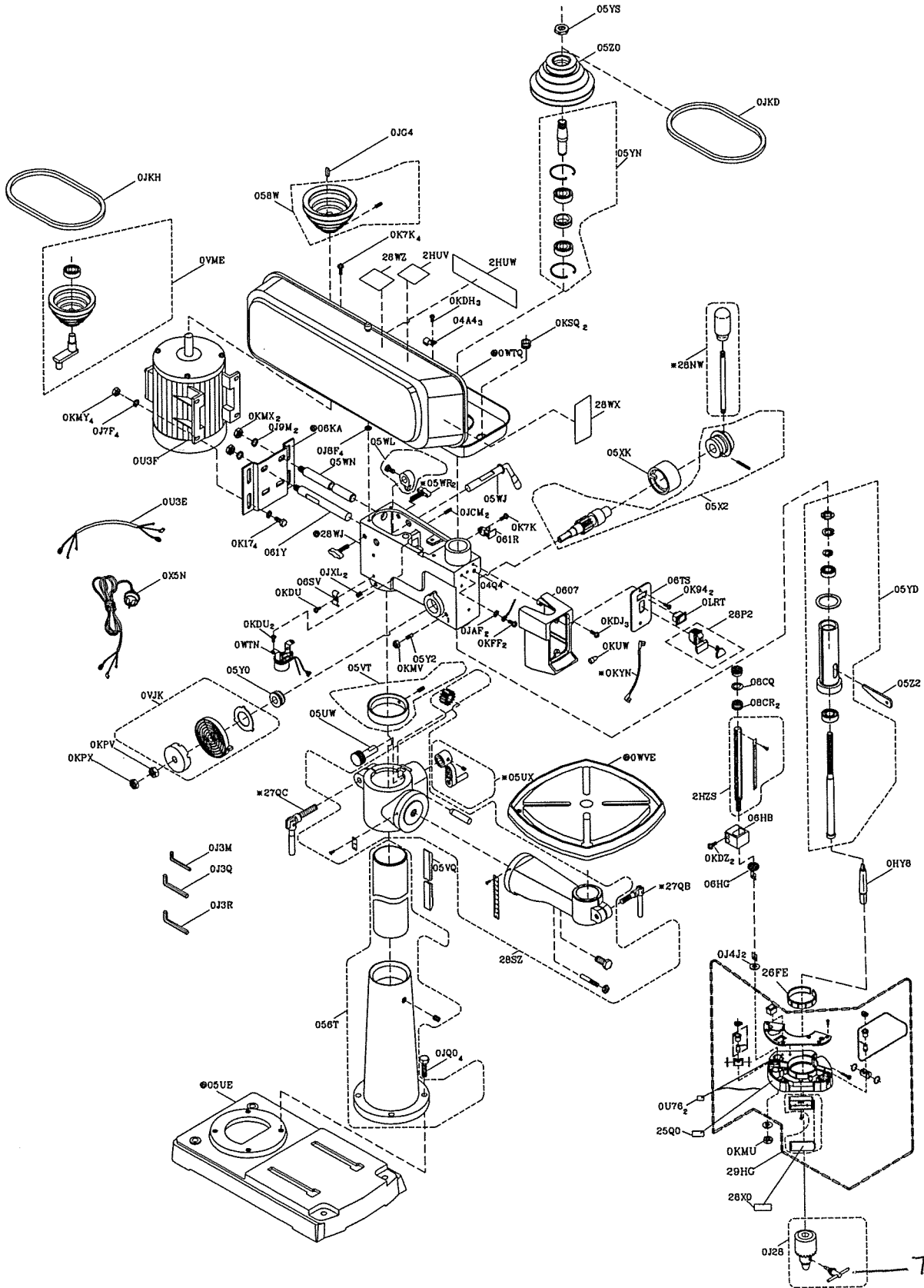


15 in. (380mm) DRILL PRESS  
 SCHEMATIC-FOR AUSTRALIA AND NEW ZEALAND

MODEL NO. B16RM



# PARTS LIST-FOR AUSTRALIA AND NEW ZEALAND

**15 in. (380mm) DRILL PRESS PARTS LIST**

**MODEL NO. B16RM**

**PARTS LIST FOR SCHEMATIC**

**Always order by I.D. Number**

Parts No.	I.D.	Description	Size	QTY	Parts No.	I.D.	Description	Size	QTY
726323	0607	SWITCH BOX		1	726521	OJKH	V-BELT		1
726359	04A4	CLAMP-CORD		3	726528	OJQ0	HEX. HD. BOLT	M10*1.5-40	4
726360	04Q4	STICKER		1	726535	OJXL	HEX. SOC. SET SCREW	M10*1.5-12	2
726361	056T	COLUMN ASS'Y		1	726535	OK17	HEX. HD. SCREW AND WASHER	M8*1.25-20	4
726362	058W	MOTOR PULLEY ASS'Y		1	726557	OK7K	CR. RE. ROUND WASHER HD. SCREW	M6*1.0-12	5
726363	05UE	BASE		1	726564	OK94	CR. RE. TRUSS HD. TAPPING SCREW	M5*12-16	2
326389	05UW	WORM		1	726579	OKDH	CR. RE. PAN HD. SCREW	M5*0.8-8	3
726364	05UX	CRANK HANDLE ASS'Y		1	726580	OKDJ	CR. RE. PAN HD. SCREW	M5*0.8-12	3
726366	05VQ	RACK		1	726582	OKDU	CR. RE. PAN HD. SCREW	M6*1.0-12	3
726367	05VT	RACK RING ASS'Y		1	726583	OKDZ	CR. RE. PAN HD. SCREW	M6*1.0-35	2
726368	05WJ	HANDLE SHIFTER		1	726586	OKFF	CR. RE. PAN HD. SCREW	M5*0.8-8	2
726369	05WL	MOTOR BAR SHIFTER ASS'Y		1	726599	OKMU	HEX. NUT	M10*1.5 T=8	1
726370	05WN	MOTOR ROD		1	726600	OKMV	HEX. NUT	M10*1.5 T=8	1
726371	05WR	SHIFTER BOLT	M10*1.5-33	2	726602	OKMX	HEX. NUT	M12*1.75 T=10	2
726373	05X2	FEED SHAFT ASS'Y		1	726603	OKMY	HEX. NUT	M8*1.25 T=6.5	4
726374	05XK	SCALE RING		1	726608	OKPV	HEX. NUT	1/2*20UNF T=10	1
726375	05Y0	SHAFT SEAT		1	726609	OKPX	HEX. NUT	1/2*20UNF T=6.5	1
726377	05Y2	QUILL SET SCREW	M10*1.5-2	1	726624	OKSQ	STRAIN RELIEF	φ20	2
726378	05YD	SPINDLE ASS'Y		1	726627	OKUW	TERMINAL		1
726379	05YN	DRIVING SLEEVE ASS'Y		1	726629	OKYN	LEAD WIRE ASS'Y		1
726380	05YS	PULLEY SET NUT	φ22.5	1	726634	OLRT	ROCKER SWITCH		1
726381	05Z0	SPINDLE PULLEY		1	326395	OU3E	MOTOR WIRE		1
726382	05Z2	WEDGE SHIFTER		1	326396	OU3F	MOTOR		1
726383	061R	CHUCK KEY HOLDER		1	326653	OU76	LASER STICKER		2
726384	061Y	MOTOR ROD		1	726645	OVJK	PLATE SPRING ASS'Y		1
726385	06HB	PLUNGER HOUSING		1	726646	OVME	CENTER PULLEY ASS'Y		1
726386	06HG	CIRCULAR NUT		1	326397	OWTN	BULB SOCKET ASS'Y		1
326392	06KA	MOTOR BASE		1	726647	OWTQ	PULLEY COVER ASS'Y		1
726388	06SV	CORD-CLAMP		1	326398	OWVE	TABLE		1
726389	06TS	SWITCH COVER		1	326529	OX5N	POWER CABLE		1
726432	08CQ	WASHER	φ24 T=1/16	1	326654	25Q0	WARNING LABEL		1
726433	08CR	NUT	M16*2.0 D=φ24 H=13	2	326399	26FE	COLLAR		1
726470	0HY8	DRILLING ARBOR		1	726776	27QB	TABLE LOCK HANDLE		1
726471	0J28	CHUCK & KEY		1	726777	27QC	COLUMN LOCK HANDLE		1
726472	0J3M	HEX. WRENCH		1	726810	28NW	HANDLE BAR ASS'Y		1
726474	0J3Q	HEX WRENCH		1	726811	28P2	ROCKER SWITCH		1
726475	0J3R	WRENCH HEX.		1	726821	28SZ	TABLE BRACKET ASS'Y		1
326393	0J4J	FLAT WASHER	φ10*20	2	326400	28WJ	HEAD		1
726493	0J7F	FLAT WASHER	5/16*7/8-5/64	4	326655	28WX	TRADE-MARK LABEL		1
726496	0J8F	FLAT WASHER	1/4*3/4-3/16	4	326656	28WZ	WARNING LABEL		1
726499	0J9M	SPRING WASHER	φ1/2	2	326657	28X0	LASER STICKER		1
726502	0JAF	EXTERNAL TOOTH LOCK WASHER	φ5	2	326401	29HG	LASER ASS'Y		1
726509	0JCM	SPRING PIN		2	326659	2HUV	LABEL		1
726516	0JG4	PARALLEL KEY		1	326658	2HUW	LABEL		1
726520	0JKD	V-BELT		1	326668	2HZZ	SET BOLT ASS'Y		1

PART NO.	I.D. No.	Description	Size	Price (US)	Measurement	Model info.
726323 ✓	0607	SWITCH BOX		2.63	PC	B16RM
726359	04A4	CLAMP-CORD		0.10	PC	B16RM
726360	04Q4	STICKER		3.63	PC	B16RM
726361 ✓	056T	COLUMN ASS'Y		35.85	ST	B16RM
726362 ✓	058W	MOTOR PULLEY ASS'Y		3.31	ST	B16RM
726363 ✓	05UE	BASE		27.79	PC	B16RM
326389 ✓	05UW	WORM		1.02	PC	B16RM
726364 ✓	05UX	CRANK HANDLE ASS'Y		1.94	ST	B16RM
726366 ✓	05VQ	RACK		6.08	PC	B16RM
726367 ✓	05VT	RACK RING ASS'Y		1.96	PC	B16RM
726368 ✓	05WJ	HANDLE SHIFTER		1.46	PC	B16RM
726369 ✓	05WL	MOTOR BAR SHIFTER ASS'Y		0.75	ST	B16RM
726370 ✓	05WN	MOTOR ROD		1.21	PC	B16RM
726371 ✓	05WR	SHIFTER BOLT	M10*1.5-33	0.17	PC	B16RM
726373 ✓	05X2	FEED SHAFT ASS'Y		9.60	ST	B16RM
726374 ✓	05XK	SCALE RING		2.42	PC	B16RM
726375 ✓	05Y0	SHAFT SEAT		0.40	PC	B16RM
726377 ✓	05Y2	QUILL SET SCREW	M10*1.5-2	0.10	PC	B16RM
726378 ✓	05YD	SPINDLE ASS'Y		22.19	ST	B16RM
726379 ✓	05YN	DRIVING SLEEVE ASS'Y		8.56	ST	B16RM
726380 ✓	05YS	PULLEY SET NUT	φ22.5	0.33	PC	B16RM
726381 ✓	05Z0	SPINDLE PULLEY		4.83	PC	B16RM
726382	05Z2	WEDGE SHIFTER		0.73	PC	B16RM
726383 ✓	061R	CHUCK KEY HOLDER		0.19	PC	B16RM
726384 ✓	061Y	MOTOR ROD		1.21	PC	B16RM
726385 ✓	06HB	PLUNGER HOUSING		0.67	PC	B16RM
726386 ✓	06HG	CIRCULAR NUT		0.31	PC	B16RM
326392 ✓	06KA	MOTOR BASE		2.21	PC	B16RM
726388	06SV	CORD-CLAMP		0.23	PC	B16RM
726389 ✓	06TS	SWITCH COVER		0.33	PC	B16RM
726432 ✓	08CQ	WASHER	φ24 T=1/16	0.15	PC	B16RM
726433 ✓	08CR	NUT	M16*2.0 D=φ2	0.33	PC	B16RM
726470 ✓	0HY8	DRILLING ARBOR		1.94	PC	B16RM
726471 ✓	0J28	CHUCK & KEY		13.63	PC	B16RM
726472 ✓	0J3M	HEX. WRENCH		1.06	Bag (= 20 pcs)	B16RM
726474 ✓	0J3Q	HEX WRENCH		0.08	PC	B16RM
726475	0J3R	WRENCH HEX.		0.19	PC	B16RM
326393	0J4J	FLAT WASHER	φ10*20	0.56	Bag (= 20 pcs)	B16RM
726493	0J7F	FLAT WASHER	5/16*7/8-5/64	0.54	Bag (= 20 pcs)	B16RM
726496	0J8F	FLAT WASHER	1/4*3/4-3/16	0.78	Bag (= 20 pcs)	B16RM
726499	0J9M	SPRING WASHER	φ1/2	0.46	Bag (= 20 pcs)	B16RM
726502	0JAF	EXTERNAL TOOTH LOCK WASHER	φ5	0.10	Bag (= 20 pcs)	B16RM
726509 ✓	0JCM	SPRING PIN		1.38	Bag (= 20 pcs)	B16RM
726516 ✓	0JG4	PARALLEL KEY		2.64	Bag (= 20 pcs)	B16RM
726520 ✓	0JKD	V-BELT		1.02	PC	B16RM
726521 ✓	0JKH	V-BELT		1.04	PC	B16RM
726528	0JQ0	HEX. HD. BOLT	M10*1.5-40	1.32	Bag (= 20 pcs)	B16RM
726535 X	0JXL	HEX. SOC. SET SCREW	M10*1.5-12	1.00	Bag (= 20 pcs)	B16RM

PART NO.	I.D. No.	Description	Size	Price (US\$)	Measurement	Model info.
726535	0K17	HEX. HD. SCREW AND WASHER	M8*1.25-20	1.86	Bag (= 20 pcs)	B16RM
726557	0K7K	CR. RE. ROUND WASHER HD. SCREW	M6*1.0-12	0.48	Bag (= 20 pcs)	B16RM
726564	0K94	CR. RE. TRUSS HD. TAPPING SCREW	M5*12-16	0.68	Bag (= 20 pcs)	B16RM
726579	0KDH	CR. RE. PAN HD. SCREW	M5*0.8-8	0.20	Bag (= 20 pcs)	B16RM
726580	0KDJ	CR. RE. PAN HD. SCREW	M5*0.8-12	0.40	Bag (= 20 pcs)	B16RM
726582	0KDU	CR. RE. PAN HD. SCREW	M6*1.0-12	0.40	Bag (= 20 pcs)	B16RM
726583	0KDZ	CR. RE. PAN HD. SCREW	M6*1.0-35	0.28	Bag (= 20 pcs)	B16RM
726586	0KFF	CR. RE. PAN HD. SCREW	M5*0.8-8	0.22	Bag (= 20 pcs)	B16RM
726599	0KMU	HEX. NUT	M10*1.5 T=8	0.05	PC	B16RM
726600	0KMV	HEX. NUT	M10*1.5 T=8	0.40	Bag (= 20 pcs)	B16RM
726602	0KMX	HEX. NUT	M12*1.75 T=16	1.22	Bag (= 20 pcs)	B16RM
726603	0KMY	HEX. NUT	M8*1.25 T=6.5	0.46	Bag (= 20 pcs)	B16RM
726608	0KPV	HEX. NUT	1/2*20UNF T=	0.04	PC	B16RM
726609	0KPX	HEX. NUT	1/2*20UNF T=	0.88	Bag (= 20 pcs)	B16RM
726624	0KSQ	STRAIN RELIEF	φ20	1.25	Bag (= 20 pcs)	B16RM
726627	0KUW	TERMINAL		0.04	PC	B16RM
726629	0KYN	LEAD WIRE ASS'Y		0.29	PC	B16RM
726634	0LRT	ROCKER SWITCH		1.42	PC	B16RM
326395	0U3E	MOTOR WIRE		0.35	PC	B16RM
326396	0U3F	MOTOR		86.58	PC	B16RM
326653	0U76	LASER STICKER		0.04	PC	B16RM
726645	0VJK	PLATE SPRING ASS'Y		2.19	ST	B16RM
726646	0VME	CENTER PULLEY ASS'Y		7.56	ST	B16RM
326397	0WTN	BULB SOCKET ASS'Y		1.60	ST	B16RM
726647	0WTQ	PULLEY COVER ASS'Y		16.94	ST	B16RM
326398	0WVE	TABLE		24.33	PC	B16RM
326529	0X5N	POWER CABLE		4.31	PC	B16RM
326654	25Q0	WARNING LABEL		0.02	PC	B16RM
326399	26FE	COLLAR		0.19	PC	B16RM
726776	27QB	TABLE LOCK HANDLE		0.92	PC	B16RM
726777	27QC	COLUMN LOCK HANDLE		1.67	PC	B16RM
726810	28NW	HANDLE BAR ASS'Y		2.77	ST	B16RM
726811	28P2	ROCKER SWITCH		1.31		B16RM
726821	28SZ	TABLE BRACKET ASS'Y		16.02	ST	B16RM
326400	28WJ	HEAD		26.88	PC	B16RM
326655	28WX	TRADE-MARK LABEL		1.31	PC	B16RM
326656	28WZ	WARNING LABEL		0.25	PC	B16RM
326657	28X0	LASER STICKER		0.04	PC	B16RM
326401	29HG	LASER ASS'Y		19.94	ST	B16RM
326659	2HUV	LABEL		0.06	PC	B16RM
326658	2HUW	LABEL		0.56	PC	B16RM
326668	2HZS	SET BOLT ASS'Y		1.22	ST	B16RM

EX- WORK IN US\$ FOR SPARE PARTS ORDERS