

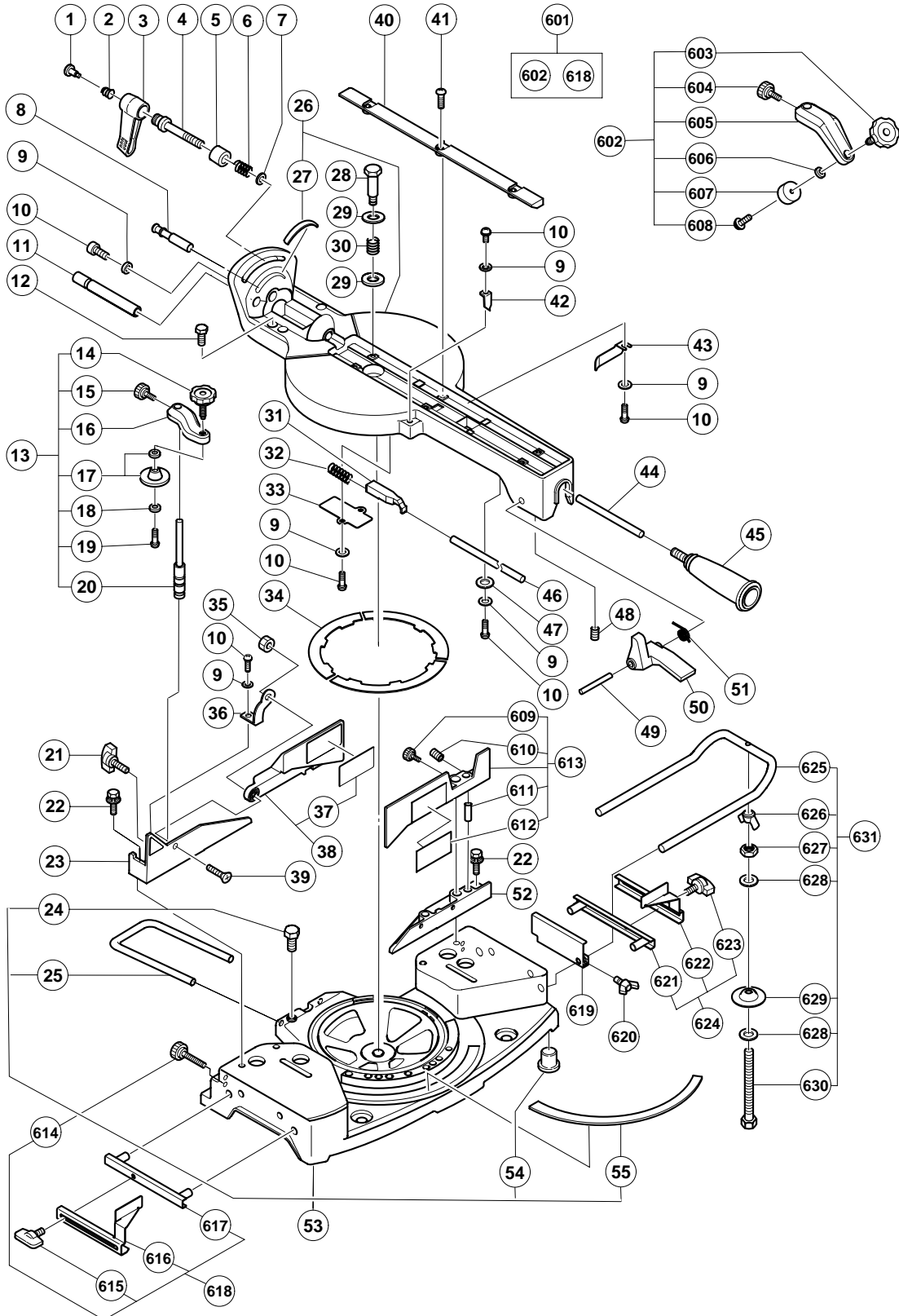
ELECTRIC TOOL PARTS LIST

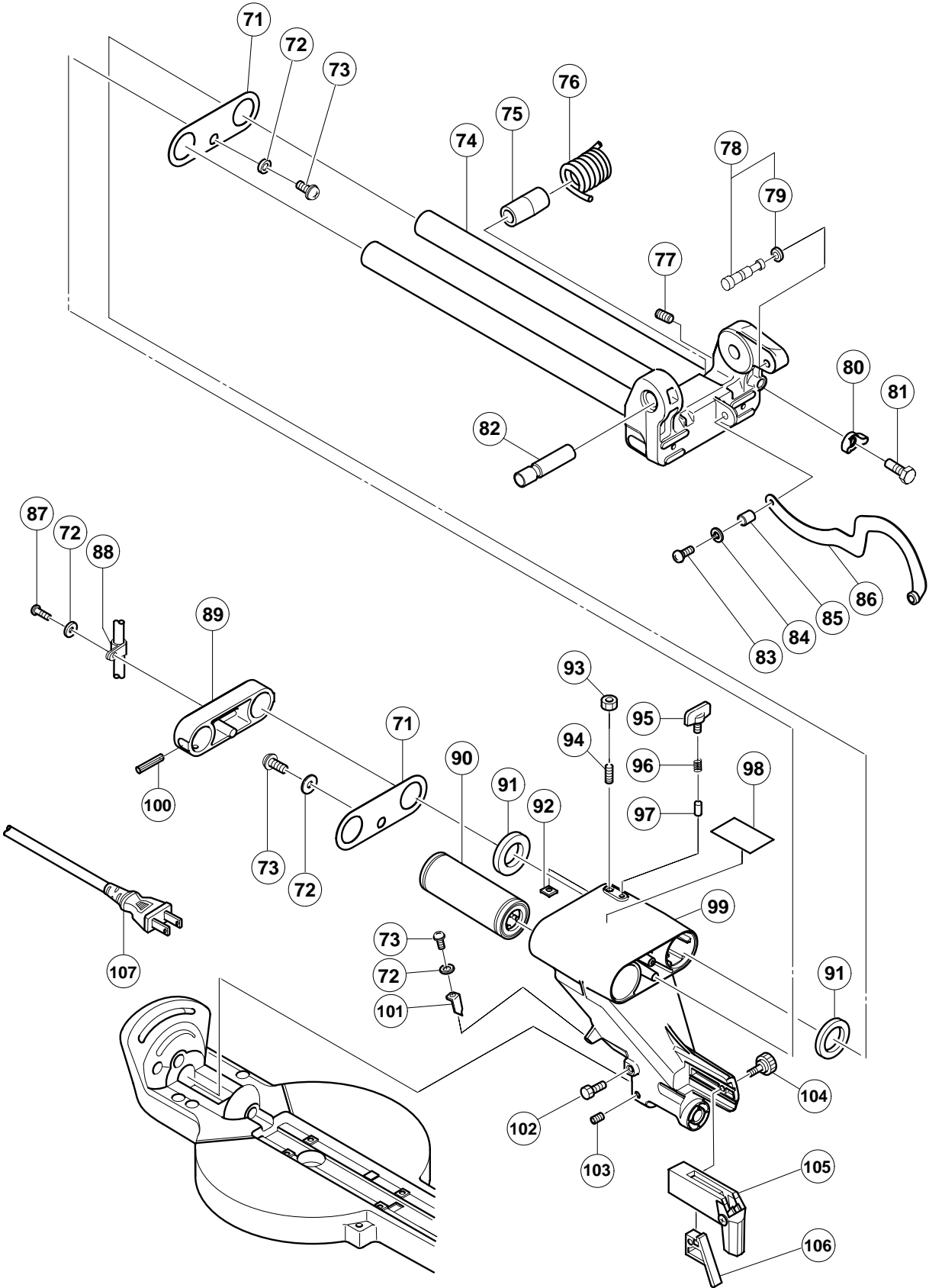
SLIDE COMPOUND SAW

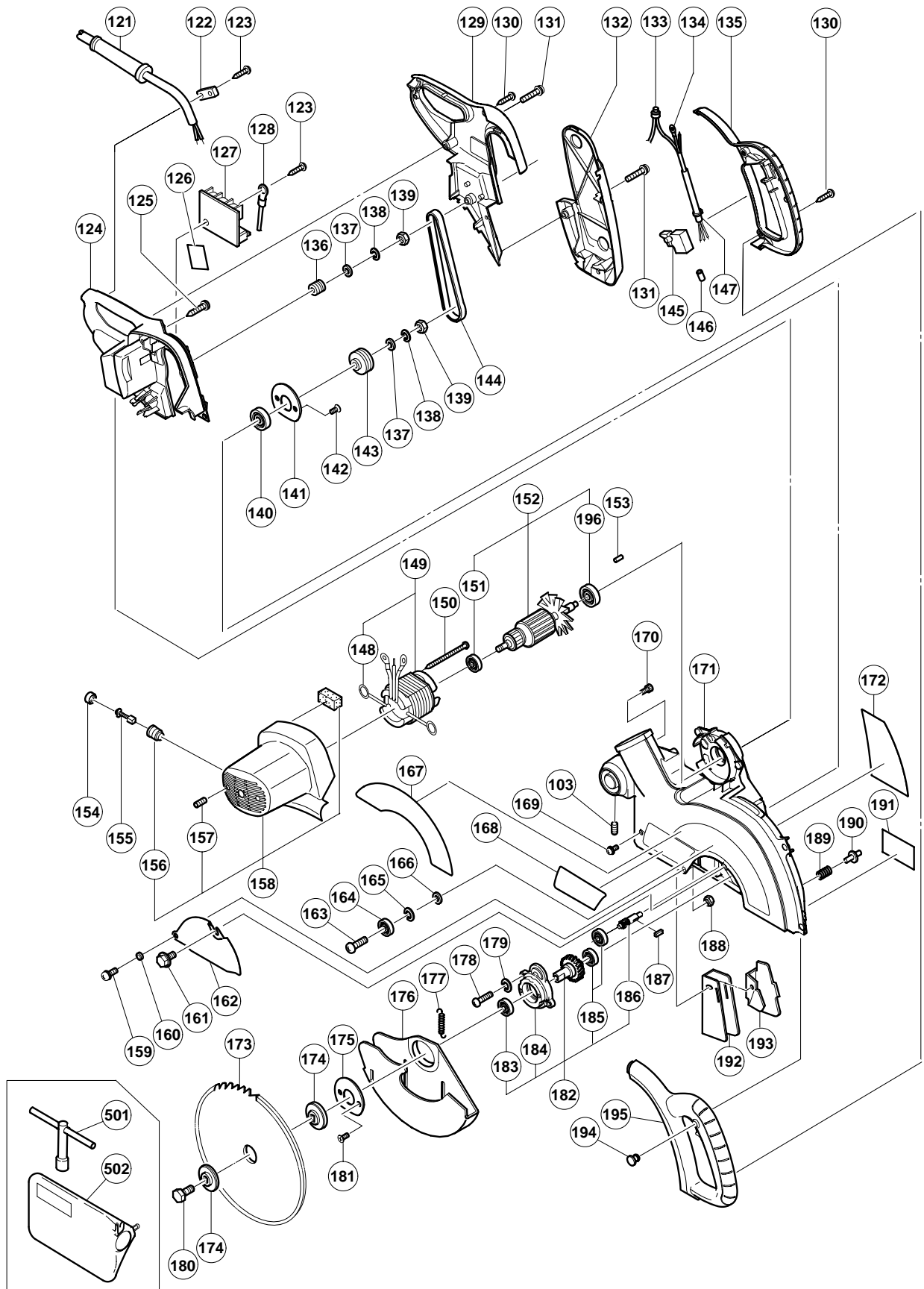
2002 · 10 · 10

Model C 10FSB

(E1)







PARTS

C 10FSB

ITEM NO.	CODE NO.	DESCRIPTION	NO. USED	REMARKS
1	305-180	CLUTCH SCREW	1	
2	305-179	CLUTCH SPRING	1	
3	312-488	CLAMP LEVER	1	
4	307-725	BOLT (LEFT HAND) M10	1	
5	315-195	SLEEVE	1	
6	305-190	METAL SPRING (A)	1	
7	965-077	SPECIAL WASHER	1	
8	321-330	SET PIN (A)	1	
9	949-429	BOLT WASHER M4 (10 PCS.)	8	
10	949-215	MACHINE SCREW M4X8 (10 PCS.)	8	
11	320-141	HINGE SHAFT (A)	1	
12	303-409	NYLOCK BOLT M8X25	2	
13	321-370	WISE ASS'Y	1	INCLUD.14-20
14	308-396	KNOB BOLT M10	1	
15	998-836	KNOB BOLT M6X11	1	
16		SCREW HOLDER	1	
17	319-974	WISE PLATE SET	1	
18	996-722	WASHER	1	
19	996-247	MACHINE SCREW (W/WASHERS) M5X12 (BLACK)	1	
20	321-371	WISE SHAFT	1	
21	302-459	WING BOLT M6X17	1	
22	307-221	BOLT (W/WASHERS) M8X35 (BLACK)	4	
23	321-346	FENCE (B)	1	
24	949-610	BOLT M6X10 (10 PCS.)	1	
25	998-844	HOLDER	1	
26	321-412	TURN TABLE ASS'Y	1	INCLUD.27
27	321-343	SCALE (B)	1	
28	312-480	SHAFT (B)	1	
29	949-437	BOLT WASHER M12 (10 PCS.)	2	
30	312-481	SPRING	1	
31	321-335	STOPPER (A)	1	
32	321-417	SPRING (E)	1	
33	321-336	PIN COVER	1	
34	998-811	LINER	3	
35	311-144	NYLON NUT M6	1	
36	321-331	PLATE	1	
37	321-386	WARNING LABEL (H)	1	
38	321-385	SUB FENCE (B) ASS'Y	1	INCLUD.37
39	949-342	FLAT HD. SCREW M6X25 (10 PCS.)	1	
40	998-818	TABLE INSERT	2	
41	949-258	MACHINE SCREW M6X20 (10 PCS.)	6	
42	321-329	INDICATOR	1	
43	321-342	SPACER (A)	1	
44	321-341	SHAFT (A)	1	
45	976-805	SIDE HANDLE	1	
46	321-337	SHAFT (C)	1	
47	875-249	THRUST WASHER	2	
48	987-860	SEAL LOCK HEX. SOCKET SET SCREW M6X6	1	
49	321-339	LEVER SHAFT	1	
50	321-338	LEVER	1	
51	321-340	SPRING (D)	1	

PARTS

C 10FSB

ITEM NO.	CODE NO.	DESCRIPTION	NO. USED	REMARKS
52	321-345	FENCE (A)	1	
53	321-372	BASE ASS'Y	1	INCLUD. 24, 25, 54, 55
54	312-672	BASE RUBBER	4	
55	315-210	SCALE (A)	1	
71	996-227	PACKING COVER	2	
72	949-429	BOLT WASHER M4 (10 PCS.)	5	
73	949-215	MACHINE SCREW M4X8 (10 PCS.)	4	
74	321-391	HINGE (B) ASS'Y	1	INCLUD. 89
75	996-276	SLEEVE	1	
76	321-332	SPRING	1	
77	961-554	HEX. SOCKET SET SCREW M8X10	1	
78	302-518	STOPPER PIN ASS'Y	1	INCLUD. 79
79	984-528	O-RING (P-6)	1	
80	949-312	WING NUT M8 (10 PCS.)	1	
81	949-633	BOLT M8X50 (10 PCS.)	1	
82	320-141	HINGE SHAFT (A)	1	
83	949-237	MACHINE SCREW M5X12 (10 PCS.)	1	
84	949-454	SPRING WASHER M5 (10 PCS.)	1	
85	998-980	SPACER	1	
86	321-368	LINK	1	
87	949-217	MACHINE SCREW M4X12 (10 PCS.)	1	
88	948-193	NYLON CLIP	2	
89	321-352	SUPPORT	1	
90	321-347	BALL BUSHING	1	
91	996-226	FELT	2	
92	996-223	BUSHING	2	
93	949-568	LOCK NUT M8 (10 PCS.)	2	
94	974-500	HEX. SOCKET SET SCREW M8X16	2	
95	302-459	WING BOLT M6X17	1	
96	947-859	LOCK SPRING	1	
97	963-174	CLAMP PIECE (B)	1	
98	320-206	CAUTION LABEL (A)	1	
99	321-375	HOLDER (A)	1	
100	949-686	ROLL PIN D6X40 (10 PCS.)	2	
101	321-329	INDICATOR	2	
102	303-409	NYLOCK BOLT M8X25	1	
103	307-956	SEAL LOCK HEX. SOCKET SET SCREW M6X10	2	
104	302-503	KNOB BOLT M6X22	1	
105	321-333	GUARD (A)	1	
106	321-394	GUARD HOLDER	1	
107	500-241Z	CORD	1	
121	938-051	CORD ARMOR D10.1	1	
122	937-631	CORD CLIP	1	
123	984-750	TAPPING SCREW (W/FLANGE) D4X16	3	
124	321-392	HANDLE (L)	1	
125	305-558	TAPPING SCREW (W/FLANGE) D5X25 (BLACK)	3	
126	321-355	SHEET	1	
127	321-354	CONTROLLER	1	
128	930-804	TERMINAL M4.0 (10 PCS.)	1	
129	321-393	HANDLE (R)	1	
130	301-653	TAPPING SCREW (W/FLANGE) D4X20 (BLACK)	6	

PARTS

C 10FSB

ITEM NO.	CODE NO.	DESCRIPTION	NO. USED	REMARKS
131	880-734	MACHINE SCREW (W/WASHERS) M5X25 (BLACK)	4	
132	321-383	PULLEY COVER	1	
133	959-141	CONNECTOR 50092 (10 PCS.)	2	
134	980-063	TERMINAL	1	
135	321-381	SWITCH HANDLE (R)	1	
136	321-356	PULLEY (A)	1	
137	949-426	WASHER M8 (10 PCS.)	2	
138	978-559	SUPER LOCK WASHER	2	
139	949-558	NUT M8 (10 PCS.)	2	
140	620-1VV	BALL BEARING 6201VVCMP2L	1	
141	307-731	COVER	1	
142	949-322	FLAT HD. SCREW M4X10 (10 PCS.)	2	
143	321-357	PULLEY (B)	1	
144	307-736	BELT (170H10)	1	
145	998-839	SWITCH (1P PILLAR TYPE) W/LOCK	1	
146	981-373	TUBE (D)	3	
147	321-532	CORD (A) ASS'Y	1	INCLUD. 134, 146
148	975-884	BRUSH TERMINAL	2	
149	340-539D	STATOR ASS'Y 120V	1	INCLUD. 148
150	953-174	HEX. HD. TAPPING SCREW D5X55	2	
151	321-399	BALL BEARING 608VVC2NS7L	1	
152	360-588U	ARMATURE ASS'Y 120V	1	INCLUD. 151, 196
153	976-441	BEARING LOCK	1	
154	945-161	BRUSH CAP	2	
155	999-043	CARBON BRUSH (1 PAIR)	2	
156	958-900	BRUSH HOLDER	2	
157	938-477	HEX. SOCKET SET SCREW M5X8	2	
158	321-379	HOUSING ASS'Y	1	INCLUD. 156, 157
159	996-247	MACHINE SCREW (W/WASHERS) M5X12 (BLACK)	1	
160	998-980	SPACER	1	
161	996-577	BOLT (W/WASHERS) M6X12 (BLACK)	1	
162	318-958	SPINDLE COVER	1	
163	949-258	MACHINE SCREW M6X20 (10 PCS.)	1	
164	606-ZZM	BALL BEARING 606ZZC2PS2L	1	
165	949-455	SPRING WASHER M6 (10 PCS.)	1	
166	949-425	WASHER M6 (10 PCS.)	1	
167		HITACHI LABEL	1	
168		WARNING LABEL (G)	1	
169	304-043	MACHINE SCREW (W/WASHERS) M4X10 (BLACK)	1	
170	877-839	SEAL LOCK HEX. SOCKET HD. BOLT M5X10	1	
171	321-384	GEAR CASE	1	
172		WARNING LABEL (M)	1	
173	310-878	TCT SAW BLADE 255MM-D15.88 HOLE-NT40	1	
174	308-789	WASHER (D)	2	
175	307-731	COVER	1	
176	321-367	SAFETY COVER	1	
177	315-710	RETURN SPRING	1	
178	949-241	MACHINE SCREW M5X20 (10 PCS.)	2	
179	949-454	SPRING WASHER M5 (10 PCS.)	2	
180	998-335	BOLT (LEFT HAND) W/WASHER M7X17.5	1	
181	949-322	FLAT HD. SCREW M4X10 (10 PCS.)	2	

