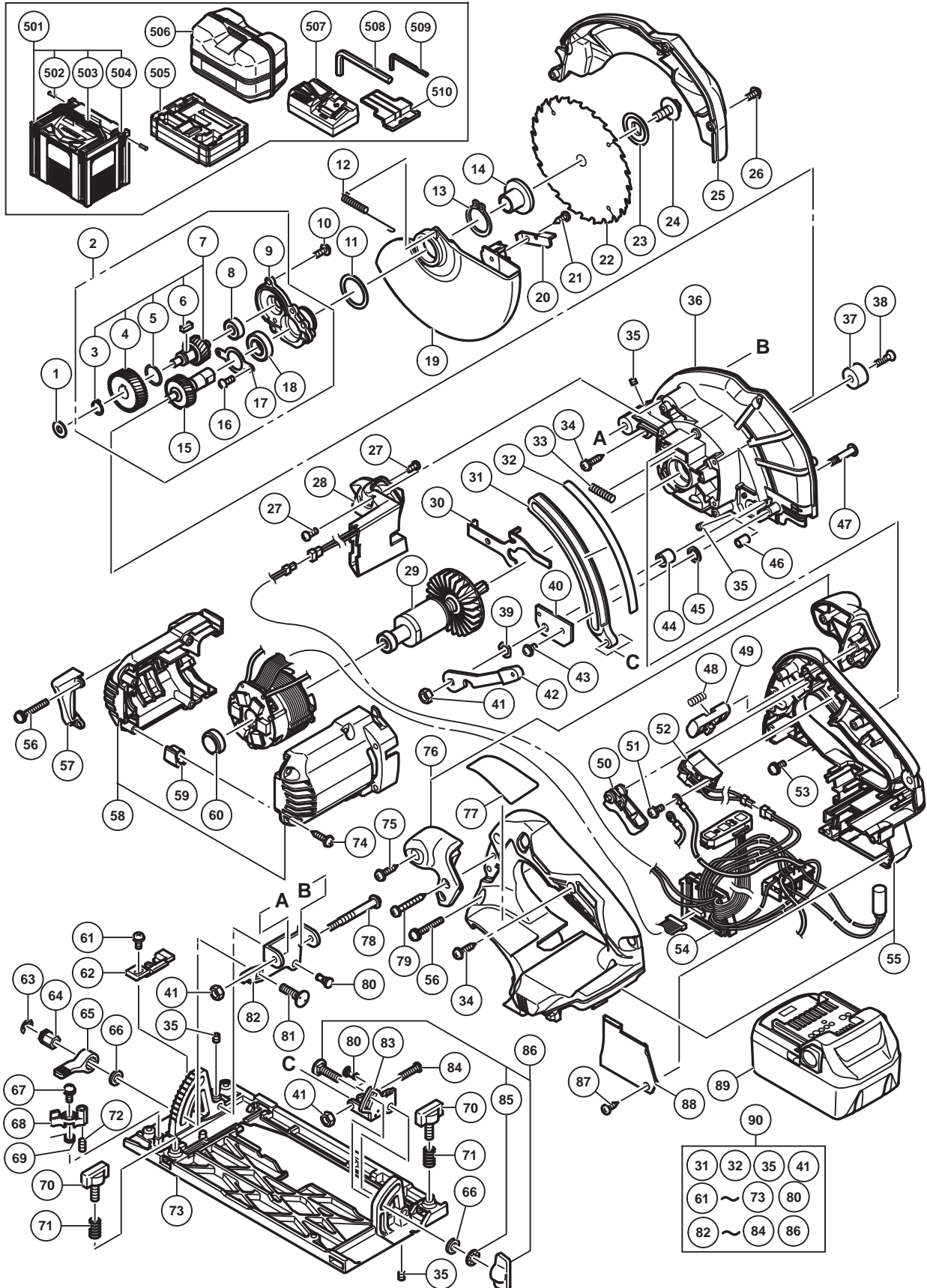


## ELECTRIC TOOL PARTS LIST

### CORDLESS CIRCULAR SAW Model C 18DBAL

2015-5-22  
(E1)



**PARTS**

C 18DBAL

ITEM NO.	CODE NO.	DESCRIPTION	NO. USED	REMARKS
1	329975	WASHER (A)	1	
2	338920	BEARING HOLDER ASS'Y	1	INCLUD.7-9,15-18
3	316487	RETAINING RING FOR D11 SHAFT	1	
4	338925	FIRST GEAR	1	
5	319567	O-RING (S-15)	1	
6	930511	FEATHER KEY 4 X 4 X 10	1	
7	338924	SECOND SHAFT ASS'Y	1	INCLUD.3-6
8	606ZZM	BALL BEARING 606VVC2	1	
9	338921	BEARING HOLDER	1	
10	951039	MACHINE SCREW (W/SP. WASHER) M4 X 12	3	
11	339257	WASHER	1	
12	338926	RETURN SPRING	1	
13	939548	RETAINING RING FOR D22 SHAFT (10 PCS.)	1	
14	338915	WASHER (A)	1	
15	338923	SPINDLE GEAR SET	1	
16	949203	MACHINE SCREW M3 X 8 (10 PCS.)	2	
17	338922	BEARING COVER	1	
18	6901VV	BALL BEARING 6901VVCMP2L	1	
19	338905	LOWER GUARD	1	
20	338927	KNOB	1	
21	302090	TAPPING SCREW D4 X 10 (BLACK)	1	
22	338935	TCT SAW BLADE 165MM-D20 HOLE-NT24	1	
23	338916	WASHER (B)	1	
24	338917	HEX FLANGE BOLT	1	
25	338904	SAW COVER	1	
26	333781	MACHINE SCREW (W/WASHER) M4 X 12 (BLACK)	1	
27	323211	MACHINE SCREW M4 X 8 (BLACK)	2	
28	339218	LED	1	
29	361010	ROTOR	1	
30	338918	LOCK LEVER	1	
31	338911	LINK	1	
32	339258	GAUGE PLATE	1	
33	334225	SPRING	1	
34	307811	TAPPING SCREW (W/FLANGE) D4 X 16 (BLACK)	5	
35	319541	SEAL LOCK HEX. SOCKET SET SCREW M5 X 6	4	
36	338907	GEAR COVER	1	
37	310842	CUSHION	1	
38	949793	FLAT HD. SCREW M5 X 20 (10 PCS.)	1	
39	334242	WAVE WASHER 8	1	
40	338929	COVER PLATE	1	
41	308387	U-NUT M5	3	
42	338930	LEVER (A)	1	
43	325079	MACHINE SCREW (W/SP. WASHER) M4 X 8 (BLACK)	1	
44	333681	CAM	1	
45	338931	WASHER	1	
46	338932	LOCK SLEEVE	1	
47	333680	CAM SHAFT	1	
48	336650	SPRING	1	
49	338901	KNOB	1	
50	338899	TRIGGER	1	

**PARTS**

C 18DBAL

ITEM NO.	CODE NO.	DESCRIPTION	NO. USED	REMARKS
51	307887	MACHINE SCREW (W/WASHER) M3.5 X 6	2	
52	338900	SWITCH	1	
53	305691	MACHINE SCREW (W/WASHERS) M4 X 14 (BLACK)	1	
54	340911	STATOR FET PCB ASS'Y	1	INCLUD.28
55	338903	HANDLE SET	1	
56	334141	MACHINE SCREW (W/WASHERS) M4 X 35 (BLACK)	6	
57	338919	FLOW GUIDE	1	
58	338902	HOUSING SET	1	
59	336554	CUSHION	2	
60	338928	RUBBER BUSHING	1	
61	315500	MACHINE SCREW (W/WASHER) M4 X 8 (BLACK)	1	
62	338913	GUIDE PIECE	1	
63	942827	RETAINING RING (E-TYPE) FOR D8 SHAFT	1	
64	333660	SPECIAL NUT M6	1	
65	333659	CLAMP LEVER	1	
66	949425	WASHER M6 (10 PCS.)	2	
67	317200	MACHINE SCREW (W/WASHERS) M4 X 8 (BLACK)	1	
68	333657	STOPPER LEVER	1	
69	339259	SPRING (B)	1	
70	307898	WING BOLT M6 X 18	2	
71	324876	SPRING	2	
72	334142	SEAL LOCK HEX. SOCKET SET SCREW M5 X 10	1	
73	338909	BASE	1	
74	301653	TAPPING SCREW (W/FLANGE) D4 X 20 (BLACK)	4	
75	301653	TAPPING SCREW (W/FLANGE) D4 X 20 (BLACK)	1	
76	338934	SUB HANDLE	1	INCLUD.75
77		NAME PLATE	1	
78	339260	ADJUSTING SCREW (A)	1	
79	305490	TAPPING SCREW (W/FLANGE) D4 X 30 (BLACK)	2	
80	320163	STEP PIN D6 X 13	2	
81	314623	BOLT (SQUARE) M6	1	
82	338910	BEVEL PLATE	1	
83	338912	SUB LINK	1	
84	333664	SPECIAL BOLT	1	
85	948167	SUPER LOCK WASHER M6	1	
86	314620	BOLT ASS'Y (SQUARE) M6 X 22	1	INCLUD.85
87	334333	TAPPING SCREW D3 X 12 (BLACK)	1	
88	338906	CONTROLLER COVER (A)	1	
89	336385	BATTERY BSL 1850 (EUROPE,AUS,NZL) (2 PCS.)	2	INCLUD.510
90	338908	BASE ASS'Y	1	INCLUD.31,32,35,41,61-73,80,82-84,86

**STANDARD ACCESSORIES**

C 18DBAL

ITEM NO.	CODE NO.	DESCRIPTION	NO. USED	REMARKS
501	337528	CASE ASS'Y (STACKABLE)	1	INCLUD.502-504
502	336474	HINGE	2	
503	336473	HANDLE	1	
504	336472	LATCH	4	
505	339219	BOTTOM CUSHION	1	
506	338933	CASE	1	
507		CHARGER (MODEL UC 18YFSL)	1	
508	944459	HEX. BAR WRENCH 5MM	1	
509	990666	HEX. BAR WRENCH 2.5MM	1	
510	329897	BATTERY COVER	2	

**OPTIONAL ACCESSORIES**

ITEM NO.	CODE NO.	DESCRIPTION	NO. USED	REMARKS
601	329331	DUCT ADAPTER	1	
602	962175	GUIDE (A) ASS'Y	1	INCLUD.603,604
603	307898	WING BOLT M6 X 18	1	
604	941056	SPRING	1	
605	339188	SUB BASE ASS'Y	1	INCLUD.606
606	321996	SPECIAL BOLT	4	
607	316161	LONG GUIDE (250MM)	1	
608	316104	LONG GUIDE (650MM)	1	