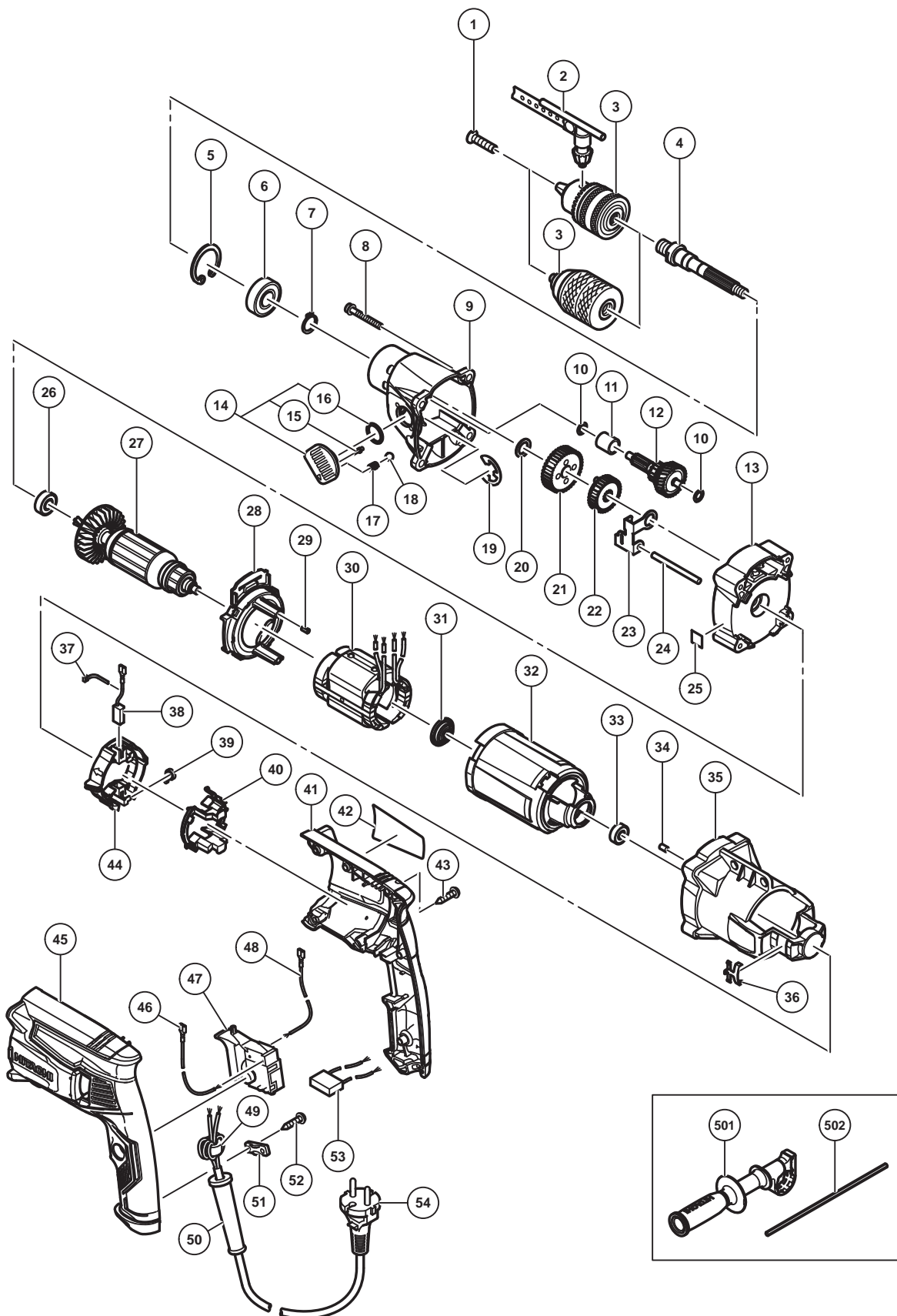


ELECTRIC TOOL PARTS LIST

■ DRILL
Model D 13VL

2015-7-6
(E1)



PARTS

D 13VL

| ITEM NO. | CODE NO. | DESCRIPTION | NO. USED | REMARKS |
|----------|----------|--|----------|--------------------------------|
| 1 | 995344 | FLAT HD. SCREW (A) (LEFT HAND) M6 X 25 | 1 | |
| * 2 | 987576 | CHUCK WRENCH FOR 13VLB-D,13VLR-D | 1 | FOR NZL,SAF,CHN,TPE |
| * 3 | 321814 | DRILL CHUCK 13VLRB-D | 1 | INCLUD.1,2 FOR NZL,SAF,CHN,TPE |
| * 3 | 319546 | DRILL CHUCK 13VLRN (KEYLESS TYPE) | 1 | |
| 4 | 339139 | SPINDLE (D) | 1 | |
| 5 | 939556 | RETAINING RING FOR D35 HOLE (10 PCS.) | 1 | |
| 6 | 6202DD | BALL BEARING 6202DD | 1 | |
| 7 | 939544 | RETAINING RING FOR D15 SHAFT (10 PCS.) | 1 | |
| 8 | 338764 | HEX. SOCKET HD. BOLT (W/FLANGE) M5 X 45 | 4 | |
| 9 | 339137 | GEAR COVER (A) | 1 | |
| 10 | 322852 | WASHER (B) | 2 | |
| 11 | 338744 | DISTANCE PIECE | 1 | |
| 12 | 338743 | SECOND PINION (A) | 1 | |
| 13 | 339276 | INNER COVER (A) | 1 | |
| 14 | 338737 | SHIFT LEVER ASS'Y | 1 | INCLUD.15,16 |
| 15 | 322848 | SHIFT PIN | 1 | |
| 16 | 878885 | O-RING (S-18) | 1 | |
| 17 | 981328 | SPRING (H) | 1 | |
| 18 | 335299 | STEEL BALL D3.5 (10 PCS.) | 1 | |
| 19 | 323048 | RETAINING RING (E-TYPE) FOR D15 SHAFT | 1 | |
| 20 | 322799 | WASHER (C) | 1 | |
| 21 | 338740 | LOW SPEED GEAR | 1 | |
| 22 | 338741 | HIGH SPEED GEAR | 1 | |
| 23 | 338742 | SHIFT ARM | 1 | |
| 24 | 984104 | PIN D5 | 1 | |
| 25 | | LABEL (SLIP CLUTCH) | 1 | |
| 26 | 608DDM | BALL BEARING 608DD | 1 | |
| * 27 | 361003B | ARMATURE 110V | 1 | |
| * 27 | 361003D | ARMATURE 220V | 1 | |
| * 27 | 361003E | ARMATURE 230V | 1 | |
| * 27 | 361003F | ARMATURE 240V | 1 | |
| 28 | 338766 | FAN GUIDE (B) | 1 | |
| 29 | 338755 | RUBBER BUSH | 2 | |
| * 30 | 340906B | STATOR 110V | 1 | |
| * 30 | 340906D | STATOR 220V | 1 | |
| * 30 | 340906E | STATOR 230V | 1 | |
| * 30 | 340906F | STATOR 240V | 1 | |
| 31 | 338751 | DUST SEAL | 1 | |
| 32 | 338750 | STATOR HOLDER | 1 | |
| 33 | 607VVC | BALL BEARING 607VV | 1 | |
| 34 | 931701 | BEARING LOCK | 1 | |
| 35 | 338749 | HOUSING (B) | 1 | |
| 36 | 338761 | CLICK PLATE | 2 | |
| 37 | 331759 | BAND | 2 | |
| 38 | 999088 | CARBON BRUSH (1 PAIR) | 2 | |
| 39 | 339292 | SPRING | 2 | |
| 40 | 338760 | BRUSH COVER | 1 | |
| 41 | 338753 | HANDLE COVER (B) | 1 | |
| 42 | | NAME PLATE | 1 | |
| 43 | 301653 | TAPPING SCREW (W/FLANGE) D4 X 20 (BLACK) | 7 | |

