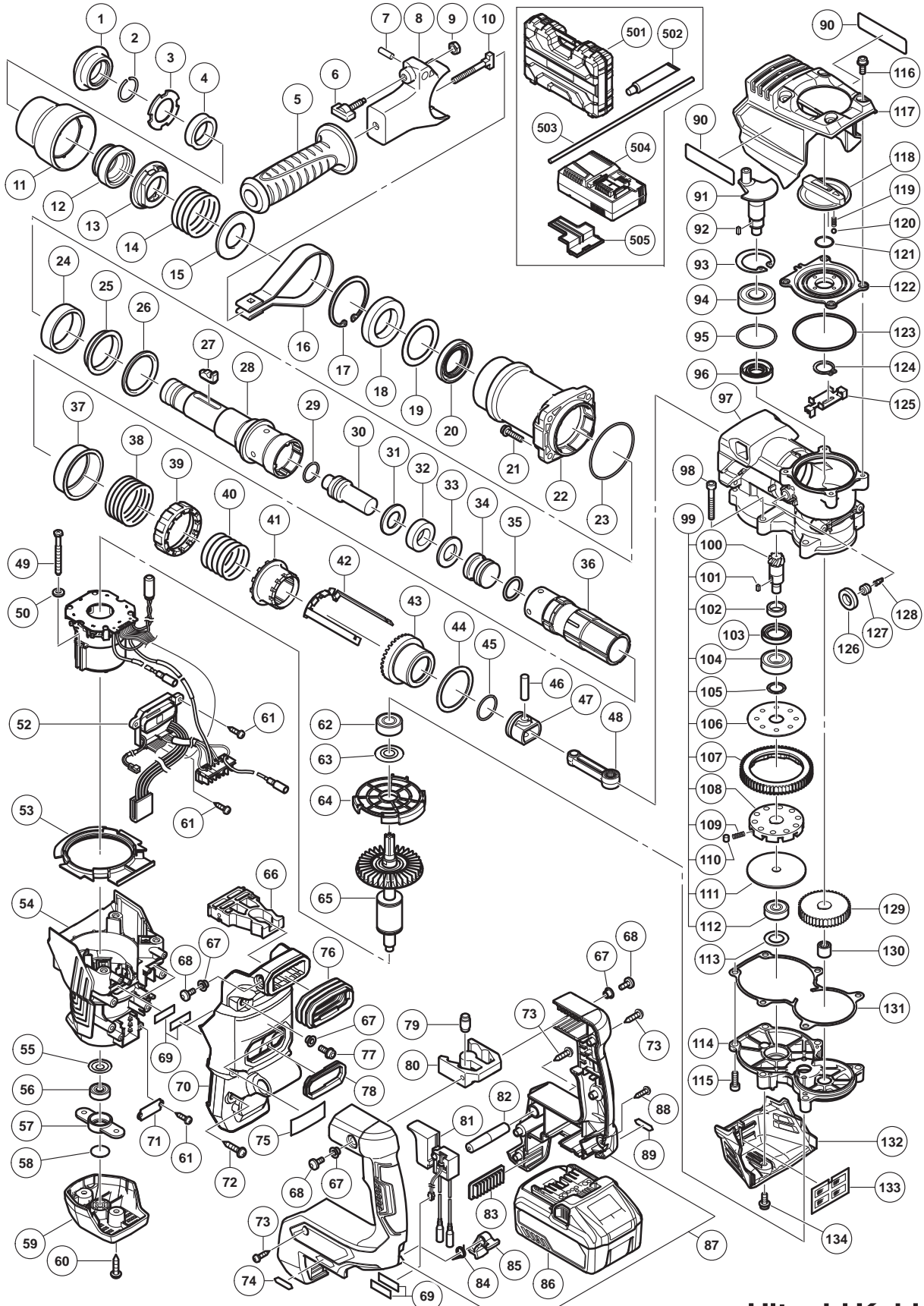


ELECTRIC TOOL PARTS LIST

CORDLESS ROTARY HAMMER Model DH 36DMA

2018-4-23
(E1)



PARTS

DH 36DMA

ITEM NO.	CODE NO.	DESCRIPTION	NO. USED	REMARKS
1	371151	FRONT CAP	1	
2	331540	STOPPER RING	1	
3	371138	RETAINER WASHER	1	
4	371152	RETAINER DAMPER (A)	1	
5	330209	SIDE HANDLE	1	
6	337577	WING BOLT	1	
7	949859	ROLL PIN D2 X 8 (10 PCS.)	1	
8	371135	MOUNT	1	
9	949556	NUT M6 (10 PCS.)	1	
10	331247	HANDLE BOLT	1	
11	371133	GRIP	1	
12	371157	BIT LOCK HOLDER	1	
13	371159	THRUST PLATE	1	
14	371167	RETAINER SPRING	1	
15	371145	SPRING HOLDER (A)	1	
16	331246	BAND	1	
17	371141	RETAINING RING D55	1	
18	6907DD	BALL BEARING 6907DDU	1	
19	371142	BEARING WASHER	1	
20	371148	OIL SEAL	1	
21	991712	HEX. SOCKET HD. BOLT (W/FLANGE) M6 X 25	4	
22	371125	CYLINDER CASE	1	
23	956996	O-RING (1AS-60)	1	
24	371153	RETAINER DAMPER (B)	1	
25	371144	DAMPER SLEEVE	1	
26	371161	RETAINER DAMPER WASHER	1	
27	370654	BIT LOCK	2	
28	371155	RETAINER SLEEVE	1	
29	313396	O-RING (C)	1	
30	371160	SECOND HAMMER	1	
31	371163	DAMPER WASHER	1	
32	371316	DAMPER	1	
33	371164	DAMPER HOLDER	1	
34	371165	STRIKER	1	
35	986104	O-RING	1	
36	371156	CYLINDER	1	
37	331533	SPRING HOLDER (B)	1	
38	331534	LOCK SPRING	1	
39	331535	LOCK SLEEVE	1	
40	371166	CLUTCH SPRING	1	
41	371137	CLUTCH	1	
42	371147	SLIDER	1	
43	371158	BEVEL GEAR	1	
44	331234	THRUST WASHER	1	
45	986104	O-RING	1	
46	331221	PISTON PIN	1	
47	326369	PISTON	1	
48	371175	CONNECTING ROD	1	
49	981824	HEX. HD. TAPPING SCREW D4 X 45	2	
50	323210	BOLT WASHER M4 (BLACK)	2	

PARTS

DH 36DMA

ITEM NO.	CODE NO.	DESCRIPTION	NO. USED	REMARKS
52	341000	STATOR FET PCB	1	
53	373076	FAN GUIDE (B)	1	
54	373077	HOUSING	1	
55	982631	WASHER (A)	1	
56	608VVM	BALL BEARING 608VVC2PS2L	1	
57	331254	BEARING HOLDER	1	
58	331547	DUST SEAL	1	
59	373090	TAIL COVER	1	
60	302089	TAPPING SCREW (W/FLANGE) D5 X 20 (BLACK)	2	
61	307811	TAPPING SCREW (W/FLANGE) D4 X 16 (BLACK)	5	
62	6201DD	BALL BEARING 6201DDCMPS2L	1	
63	325003	DUST WASHER (B)	1	
64	373075	FAN GUIDE (A)	1	
65	361085	ROTOR (A)	1	
66	373093	JOINT	1	
67	991711	DISTANCE PIECE (B)	6	
68	373092	SEAL LOCK BUTTON BOLT M5	4	
69	373411	PROTECTION SHEET	6	
70	373409	BACK COVER	1	
71	373091	PLATE	1	
72	302089	TAPPING SCREW (W/FLANGE) D5 X 20 (BLACK)	4	
73	307028	TAPPING SCREW (W/FLANGE) D4 X 25 (BLACK)	7	
74		MV LABEL (A)	1	
75		NAME PLATE	1	
76	373094	BELLOWS	1	
77	994192	HEX. SOCKET HD. BOLT (W/FLANGE) M5 X 16	2	
78	373095	PANEL RUBBER	1	
79	310124	HANDLE DAMPER	4	
80	310123	TRANSATORY UNIT	1	
81	373096	SWITCH SET	1	
82	338175	HANDLE SHAFT	1	
83	373410	BATTERY RUBBER (B)	1	
84	373097	LEVER SPRING (B)	1	
85	373098	STOPPER LEVER	1	
* 86	371750	BATTERY BSL 36A18 (EUROPE,AUS,NZL)	2	INCLUD.505
* 86	373320	BATTERY BSL 36A18 (CHN)	2	INCLUD.505
* 86	372118	BATTERY BSL 36A18 (THA)	2	INCLUD.505
* 86	372120	BATTERY BSL 36B18 (EUROPE,AUS,NZL)	2	INCLUD.505
* 86	372121	BATTERY BSL 36B18 (USA,CAN)	2	INCLUD.505
87	373100	HANDLE (A).(B) SET	1	
88	307811	TAPPING SCREW (W/FLANGE) D4 X 16 (BLACK)	1	
89		MV LABEL (B)	1	
90		BRAND LABEL	2	
91	371136	CRANK SHAFT	1	
92	944109	FEATHER KEY 3 X 3 X 8	1	
93	948391	RETAINING RING FOR D40 HOLE	1	
94	6203DD	BALL BEARING 6203DDCMPS2L	1	
95	996363	O-RING (S-40)	1	
96	321274	OIL SEAL (B)	1	
97	371173	CRANK CASE	1	INCLUD.127,128

PARTS

DH 36DMA

ITEM NO.	CODE NO.	DESCRIPTION	NO. USED	REMARKS	
98	986940	SEAL LOCK HEX. SOCKET HD. BOLT M6 X 45	4		
99	371176	SLIP CLUTCH ASS'Y	1	INCLUD.100-102,104-112	
100	331211	BEVEL PINION	1		
101	944109	FEATHER KEY 3 X 3 X 8	1		
102	321279	COLLAR	1		
103	313050	OIL SEAL (A)	1		
104	6002DD	BALL BEARING 6002DDCMPS2L	1		
105	331213	WASHER	1		
106	331214	WASHER (A)	1		
107	331215	SECOND GEAR	1		
108	321281	GEAR HOLDER	1		
109	321282	SPRING (C)	10		
110	331217	NEEDLE	10		
111	331219	SPACER	1		
112	629VVM	BALL BEARING 629VV	1		
113	331220	BEARING WASHER (C)	1		
114	371124	GEAR COVER	1		
115	992803	SEAL LOCK HEX. SOCKET HD. BOLT M6 X 20	2		
116	371170	HEX. SOCKET HD. BOLT (W/FLANGE) M5 X 18	4		
117	373701	CRANK COVER	1		
118	371134	CHANGE LEVER	1		
119	371168	LEVER SPRING	1		
120	959149	STEEL BALL D4.76 (10 PCS.)	1		
121	878885	O-RING (S-18)	1		
122	371126	LEVER SHAFT HOLDER	1		
123	877315	CYLINDER O-RING (I.D 63.9)	1		
124	939547	RETAINING RING FOR D20 SHAFT (10 PCS.)	1		
125	371146	CHANGE PLATE	1		
126	371178	FELT PACKING (A)	1		
127	371179	CAP SCREW	1		
128	995396	VALVE	1		
129	371162	FIRST GEAR	1		
130	371169	NEEDLE BEARING	1		
131	371143	SEAL PACKING	1		
132	371132	HOOD	1		
133	373414	FILTER (C)	1		
134	998471	HEX. SOCKET HD. BOLT (W/FLANGE) M5 X 12	1		

STANDARD ACCESSORIES

DH 36DMA

ITEM NO.	CODE NO.	DESCRIPTION	NO. USED	REMARKS	
501	373391	CASE	1		
502	981840	GREASE (A) FOR HAMMER. HAMMER DRILL (30G)	1		
503	971786	STOPPER ROD	1		
504		CHARGER (MODEL UC 18YSL3)	1		
505	329897	BATTERY COVER	2		

OPTIONAL ACCESSORIES

ITEM NO.	CODE NO.	DESCRIPTION	NO. USED	REMARKS	
601	320859	SYRINGE (BLOW-OUT BULB TYPE)	1		
602	308471	GREASE FOR HAMMER. HAMMER DRILL (70G)	1		
603	980927	GREASE FOR HAMMER. HAMMER DRILL (500G)	1		