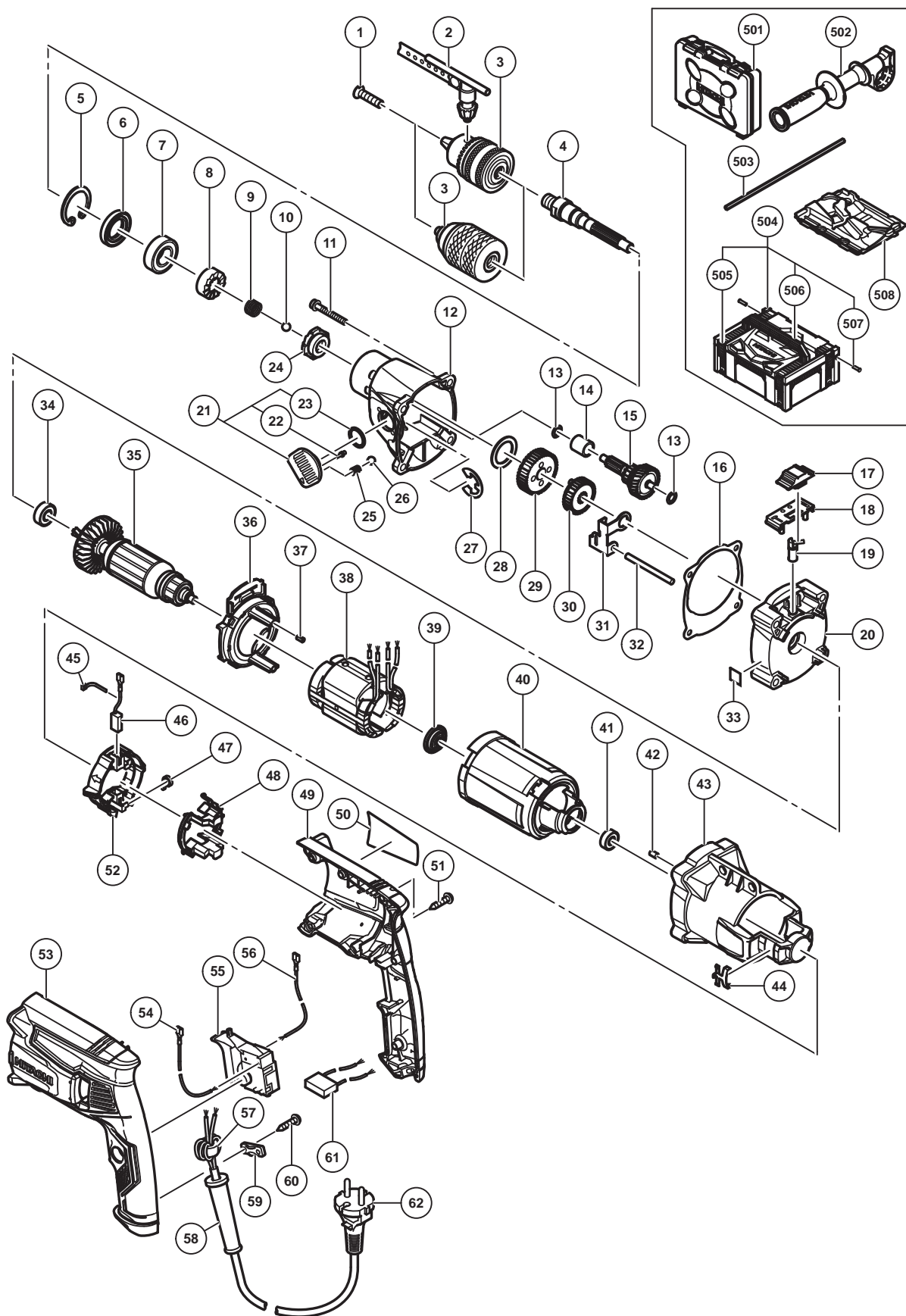


## ELECTRIC TOOL PARTS LIST

### IMPACT DRILL Model DV 20VD

2015-7-6  
(E1)



## PARTS

DV 20VD

ITEM NO.	CODE NO.	DESCRIPTION	NO. USED	REMARKS	
1	995344	FLAT HD. SCREW (A) (LEFT HAND) M6 X 25	1		
*	2	CHUCK WRENCH FOR 13VLB-D,13VLR-D	1	EXCEPT FOR NZL,GBR,SAF,RUS,EUROPE	
*	3	DRILL CHUCK 13VLRB-D	1	INCLUD.1,2	
*	3	DRILL CHUCK 13VLRN (KEYLESS TYPE)	1	FOR NZL,GBR,SAF,RUS,EUROPE	
4	338738	SPINDLE (A)	1		
5	939556	RETAINING RING FOR D35 HOLE (10 PCS.)	1		
6	971745	OIL SEAL (A)	1		
7	6003DD	BALL BEARING 6003DD	1		
8	338771	RATCHET (D)	1		
9	984101	SPRING (A)	1		
10	959150	STEEL BALL D6.35 (10 PCS.)	1		
11	338764	HEX. SOCKET HD. BOLT (W/FLANGE) M5 X 45	4		
12	338769	GEAR COVER (A) ASS'Y	1	INCLUD.24	
13	322852	WASHER (B)	2		
14	338744	DISTANCE PIECE	1		
*	15	SECOND PINION (B)	1		
*	15	SECOND PINION (A)	1	FOR SLIP CLUTCH	
16	339222	PACKING	1		
17	338746	CHANGE LEVER	1		
18	338747	CHANGE COVER	1		
19	338748	CHANGE SHAFT	1		
20	338745	INNER COVER (A)	1		
21	338737	SHIFT LEVER ASS'Y	1	INCLUD.22,23	
22	322848	SHIFT PIN	1		
23	878885	O-RING (S-18)	1		
24	338770	RATCHET (C)	1		
25	981328	SPRING (H)	1		
26	335299	STEEL BALL D3.5 (10 PCS.)	1		
27	323048	RETAINING RING (E-TYPE) FOR D15 SHAFT	1		
28	339223	WASHER	1		
29	338740	LOW SPEED GEAR	1		
30	338741	HIGH SPEED GEAR	1		
31	338742	SHIFT ARM	1		
32	984104	PIN D5	1		
*	33	LABEL (SLIP CLUTCH)	1	FOR SLIP CLUTCH	
34	608DDM	BALL BEARING 608DD	1		
*	35	361003B	ARMATURE 110V	1	
*	35	361003C	ARMATURE 120V-127V	1	
*	35	361003U	ARMATURE ASS'Y 120V	1	INCLUD.34,39,41
*	35	361003D	ARMATURE 220V	1	
*	35	361003E	ARMATURE 230V	1	
*	35	361003F	ARMATURE 240V	1	
36	338766	FAN GUIDE (B)	1		
37	338755	RUBBER BUSH	2		
*	38	340906B	STATOR 110V	1	
*	38	340906C	STATOR 120V-127V	1	
*	38	340906D	STATOR 220V	1	
*	38	340906E	STATOR 230V	1	
*	38	340906F	STATOR 240V	1	
39	338751	DUST SEAL	1		

**PARTS**

DV 20VD

ITEM NO.	CODE NO.	DESCRIPTION	NO. USED	REMARKS
40	338750	STATOR HOLDER	1	
41	607VVC	BALL BEARING 607VV	1	
42	931701	BEARING LOCK	1	
43	338749	HOUSING (B)	1	
44	338761	CLICK PLATE	2	
45	331759	BAND	2	
46	999088	CARBON BRUSH (1 PAIR)	2	
47	339292	SPRING	2	
48	338760	BRUSH COVER	1	
49	338753	HANDLE COVER (B)	1	
50		NAME PLATE	1	
51	301653	TAPPING SCREW (W/FLANGE) D4 X 20 (BLACK)	7	
52	338759	BRUSH HOLDER	1	
53	338752	HANDLE COVER (A)	1	
54	338758	INTERNAL WIRE L100	1	
55	338756	SWITCH	1	
56	338757	INTERNAL WIRE L180	1	
*	57	334379	FERRITE CORE	1 EXCEPT FOR SIN,MAL,UAE,USA,CAN,MEX
*	58	953327	CORD ARMOR D8.8	
*	58	938051	CORD ARMOR D10.1	
	59	937631	CORD CLIP	
	60	984750	TAPPING SCREW (W/FLANGE) D4 X 16	
*	61	997174	NOISE SUPPRESSOR	1 EXCEPT FOR SIN,MAL,UAE,USA,CAN,MEX
*	62	500409Z	CORD	1 (CORD ARMOR D8.8)
*	62	500434Z	CORD	1 (CORD ARMOR D8.8) FOR USA,CAN,MEX
*	62	500505Z	CORD	1 (CORD ARMOR D8.8) FOR MAL,UAE (230V), GBR (230V)
*	62	323974	CORD	1 (CORD ARMOR D10.1) FOR SIN,UAE (110V)
*	62	500439Z	CORD	1 (CORD ARMOR D8.8) FOR AUS,NZL
*	62	500461Z	CORD	1 (CORD ARMOR D8.8) FOR GBR (110V)
*	62	500468Z	CORD	1 (CORD ARMOR D8.8) FOR CHN

**STANDARD ACCESSORIES**

ITEM NO.	CODE NO.	DESCRIPTION	NO. USED	REMARKS
*	501	338762	CASE	1
	502	338768	SIDE HANDLE	1
	503	303709	DEPTH GAUGE	1
*	504	402539	SYSTEM CASE 2	1 INCLUD.505-507
*	505	336472	LATCH	4
*	506	336473	HANDLE	1
*	507	336474	HINGE	2
*	508	338763	INNER TRAY	1