

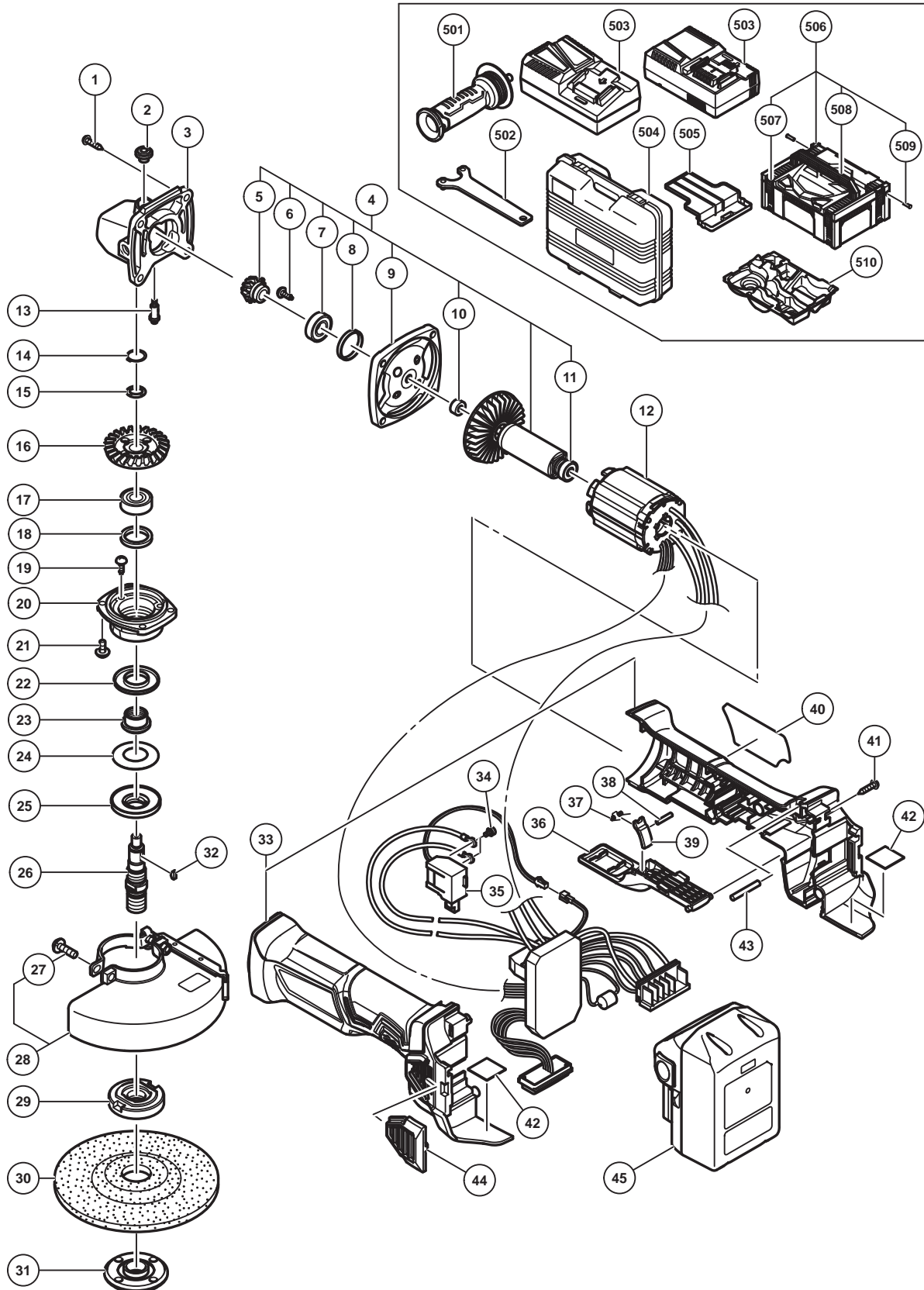
ELECTRIC TOOL PARTS LIST

■ CORDLESS DISC GRINDER

2017· 5 · 18

Model G 18DBBAL

(E1)



PARTS

G 18DBBAL

ITEM NO.	CODE NO.	DESCRIPTION	NO. USED	REMARKS
1	328643	TAPPING SCREW (W/FLANGE) D4 X 23 (BLACK)	4	
2	301944	PUSHING BUTTON	1	
3	339183	GEAR COVER ASS'Y	1	INCLUD.2,13
4	360991	ROTOR INNER COVER SET	1	INCLUD.5-11
5	371811	PINION	1	
6	371814	SLOTTED HD. SCREW (SEAL LOCK) M4	2	
7	371033	BALL BEARING 6900VVCM	1	
8	328453	RUBBER RING (A)	1	
9	371816	INNER COVER	1	
10	371927	DISTANCE RING (A)	1	
11	333826	BALL BEARING 625DD	1	
12	371691	WIRING ASS'Y	1	INCLUD.34,35
13	301943	LOCK PIN	1	
14	316487	RETAINING RING FOR D11 SHAFT	1	
15	316486	WAVE WASHER	1	
16	328364	GEAR	1	
17	6001DD	BALL BEARING 6001DDCMPS2L	1	
18	372126	FELT PACKING	1	
19	301936	SLOTTED HD. SCREW (SEAL LOCK) M4 X 10	3	
20	372124	PACKING GLAND	1	
21	307127	SEAL LOCK SCREW (W/SP. WASHER) M4 X 12	4	
22	372183	FRINGER	1	
23	371672	SLEEVE (B)	1	
24	371673	BELLEVILLE SPRING (B)	1	
25	371674	SUPPORT BODY (B)	1	
26	371685	SPINDLE (E)	1	
27	338868	SLOTTED PLUS SCREW M5	1	
* 28	338579	TOOLLESS WHEEL GUARD 115MM	1	INCLUD.27
* 28	333840	TOOLLESS WHEEL GUARD 125MM	1	INCLUD.27
29	371677	WHEEL WASHER (C)	1	
* 30	316821	D. C. WHEELS 115MM A36Q (25 PCS.)	1	
* 30	316822	D. C. WHEELS 125MM A36Q (25 PCS.)	1	
31	339579	WHEEL NUT M14	1	
32	302047	WOODRUFF KEY	1	
33	371693	HOUSING (C).(D) SET	1	
34	307887	MACHINE SCREW (W/WASHER) M3.5 X 6	2	
35	338900	SWITCH	1	
36	371694	PADDLE LEVER	1	
37	337874	SPRING	1	
38	339032	PIN	1	
39	337873	LOCK LEVER	1	
40		NAME PLATE	1	
41	301653	TAPPING SCREW (W/FLANGE) D4 X 20 (BLACK)	5	
42	338871	RUBBER CUSHION (B)	2	
43	338869	PIN	1	
44	338870	FILTER	2	
* 45	335790	BATTERY BSL 1850 (EUROPE,AUS,NZL)	2	INCLUD.505
* 45	338891	BATTERY BSL 1860 (EUROPE,AUS,NZL)	2	INCLUD.505

STANDARD ACCESSORIES

G 18DBBAL

ITEM NO.	CODE NO.	DESCRIPTION	NO. USED	REMARKS
501	336865	SIDE HANDLE	1	
502	938332Z	WRENCH	1	
* 503		CHARGER (MODEL UC 18YFSL)	1	
* 503		CHARGER (MODEL UC 18YSL3)	1	
* 504	337867	CASE	1	
505	329897	BATTERY COVER	1	
* 506	336471	CASE ASS'Y (STACKABLE 2)	1	INCLUD.507-509
* 507	336472	LATCH	4	
* 508	336473	HANDLE	1	
* 509	336474	HINGE	2	
* 510	338872	INNER TRAY	1	

OPTIONAL ACCESSORIES

ITEM NO.	CODE NO.	DESCRIPTION	NO. USED	REMARKS
601	937826Z	WASHER NUT	1	
602	937825Z	RUBBER PAD	1	
* 603	332785	WHEEL GUARD (FOR CUTTING)	1	FOR GBR
* 604	314095	SANDING DISCS 115MM C-P16 (10 PCS.)	1	FOR GBR
* 605	314096	SANDING DISCS 115MM C-P20 (10 PCS.)	1	FOR GBR
* 606	314097	SANDING DISCS 115MM C-P24 (10 PCS.)	1	FOR GBR
* 607	314098	SANDING DISCS 115MM C-P30 (10 PCS.)	1	FOR GBR
* 608	314099	SANDING DISCS 115MM C-P36 (10 PCS.)	1	FOR GBR
* 609	314100	SANDING DISCS 115MM C-P40 (10 PCS.)	1	FOR GBR
* 610	314101	SANDING DISCS 115MM C-P50 (10 PCS.)	1	FOR GBR
* 611	314102	SANDING DISCS 115MM C-P60 (10 PCS.)	1	FOR GBR
* 612	314103	SANDING DISCS 115MM C-P80 (10 PCS.)	1	FOR GBR
* 613	314104	SANDING DISCS 115MM C-P100 (10 PCS.)	1	FOR GBR
* 614	314105	SANDING DISCS 115MM C-P120 (10 PCS.)	1	FOR GBR
* 615	314062	SANDING DISCS 125MM C-P16 (10 PCS.)	1	EXCEPT FOR GBR
* 616	314063	SANDING DISCS 125MM C-P20 (10 PCS.)	1	EXCEPT FOR GBR
* 617	314064	SANDING DISCS 125MM C-P24 (10 PCS.)	1	EXCEPT FOR GBR
* 618	314065	SANDING DISCS 125MM C-P30 (10 PCS.)	1	EXCEPT FOR GBR
* 619	314066	SANDING DISCS 125MM C-P36 (10 PCS.)	1	EXCEPT FOR GBR
* 620	314067	SANDING DISCS 125MM C-P40 (10 PCS.)	1	EXCEPT FOR GBR
* 621	314068	SANDING DISCS 125MM C-P50 (10 PCS.)	1	EXCEPT FOR GBR
* 622	314069	SANDING DISCS 125MM C-P60 (10 PCS.)	1	EXCEPT FOR GBR
* 623	314070	SANDING DISCS 125MM C-P80 (10 PCS.)	1	EXCEPT FOR GBR
* 624	314071	SANDING DISCS 125MM C-P100 (10 PCS.)	1	EXCEPT FOR GBR
* 625	314072	SANDING DISCS 125MM C-P120 (10 PCS.)	1	EXCEPT FOR GBR