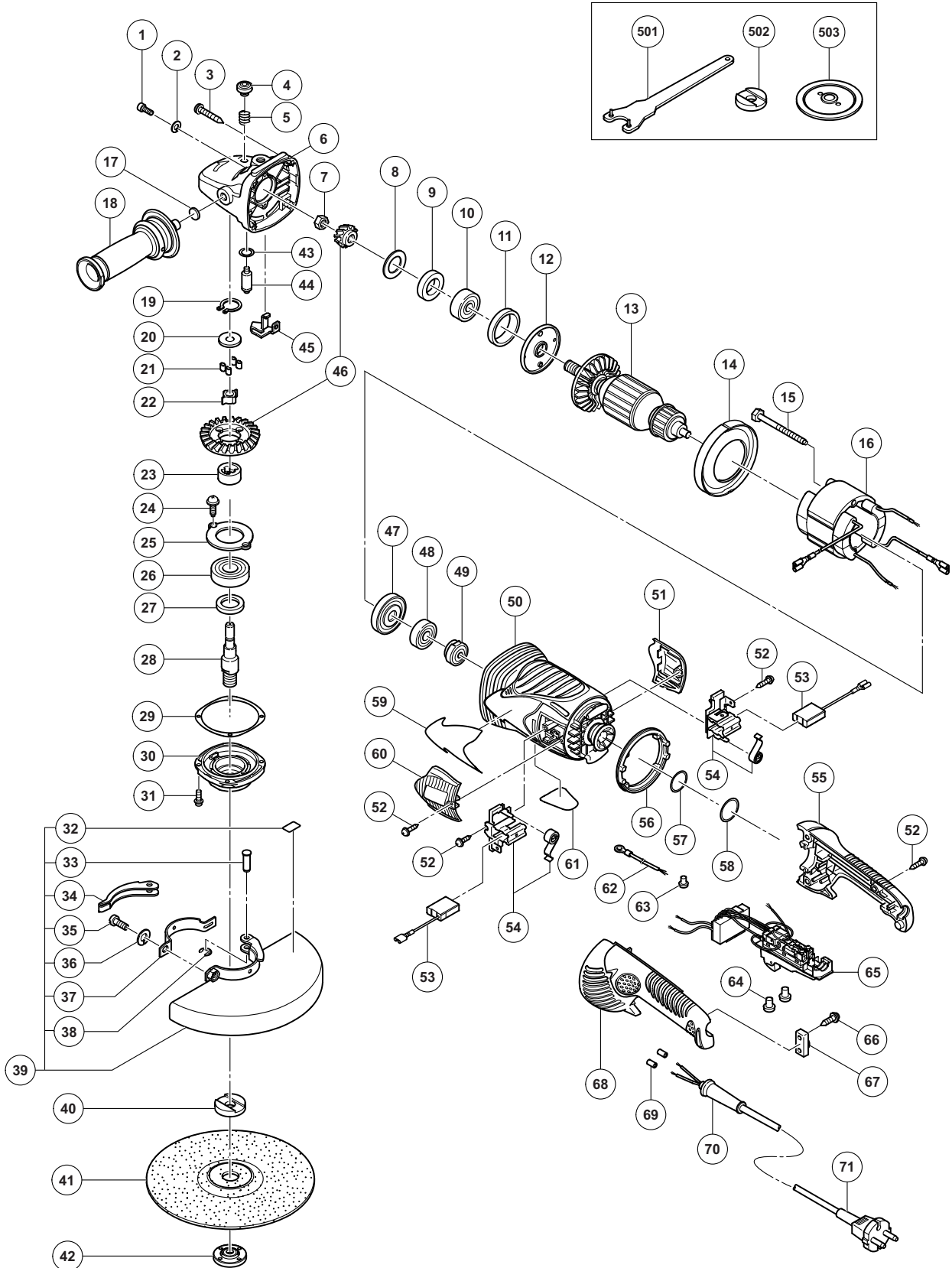


## ELECTRIC TOOL PARTS LIST

DISC GRINDER  
Model G 23UDY

2013·1·7  
(E1)



**PARTS**

G 23UDY

ITEM NO.	CODE NO.	DESCRIPTION	NO. USED	REMARKS
1	984-509	SEAL LOCK HEX. SOCKET HD. BOLT M5 X 14	2	
2	949-454	SPRING WASHER M5 (10 PCS.)	2	
3	323-209	TAPPING SCREW (W/FLANGE) D5 X 35 (BLACK)	4	
4	306-888	PUSHING BUTTON	1	
5	320-219	SPRING	1	
6	326-717	GEAR COVER ASS'Y	1	INCLUD. 4, 5, 17, 43, 44
7	320-226	SPECIAL NUT M10	1	
8	320-221	SEAL WASHER	1	
9	320-222	FELT PACKING	1	
10	630-1VV	BALL BEARING 6301VVCMP2L	1	
11	994-208	RUBBER RING (B)	1	
12	320-220	BEARING COVER (A)	1	
* 13	360-777E	ARMATURE 220 V-230 V	1	
* 13	360-594F	ARMATURE 240 V	1	
14	320-215	FAN GUIDE	1	
15	984-271	HEX. HD. TAPPING SCREW D5 X 75	2	
16	340-846E	STATOR 230 V-240 V	1	
17	937-033	FELT WASHER	1	
18	322-411	SIDE HANDLE	1	
19	939-540	RETAINING RING FOR D10 SHAFT (10 PCS.)	1	
20	326-722	COUPLING COVER	1	
21	326-721	COUPLING DAMPER	4	
22	333-147	COUPLING	1	
23	328-700	INNER	1	
24	949-236	MACHINE SCREW M5 X 10 (10 PCS.)	2	
25	326-723	BEARING COVER (B)	1	
26	630-2VV	BALL BEARING 6302VVCMP2L	1	
27	990-852	FELT PACKING (B)	1	
28	326-727	SPINDLE	1	
29	320-228	SEAL PLATE	1	
30	320-227	PACKING GLAND	1	
31	994-192	HEX. SOCKET HD. BOLT (W/FLANGE) M5 X 16	4	
32	311-492	LABEL	1	
33	321-546	SET PIN	1	
34	321-545	LEVER	1	
35	306-887	BOLT M8 X 22	1	
36	949-457	SPRING WASHER M8 (10 PCS.)	1	
37	321-544	SET PIECE	1	
38	673-489	RETAINING RING (E-TYPE) FOR D5 SHAFT	1	
39	321-547	WHEEL GUARD ASS'Y	1	INCLUD. 32-38
* 40	937-907Z	WHEEL WASHER (C)	1	
* 40	937-908Z	WHEEL WASHER (B)	1	FOR AUS
41	316-825	D. C. WHEELS 230 MM A24R (25 PCS.)	1	
42	937-909Z	WHEEL NUT M14 X 2	1	
43	320-218	O-RING	1	
44	306-890	LOCK PIN	1	
* 45	335-511	STOP PIECE (C)	1	EXCEPT FOR AUS, NZL
46	326-718	GEAR AND PINION SET	1	
47	330-029	DUST SEAL	1	
48	600-0VV	BALL BEARING 6000VVCMP2L	1	



**STANDARD ACCESSORIES**

G 23UDY

ITEM NO.	CODE NO.	DESCRIPTION	NO. USED	REMARKS
	501	325-491 WRENCH	1	
*	502	937-907Z WHEEL WASHER (C)	1	FOR AUS, NZL
*	503	937-917Z WHEEL NUT (B)	1	FOR AUS, NZL

**OPTIONAL ACCESSORIES**

ITEM NO.	CODE NO.	DESCRIPTION	NO. USED	REMARKS
	601	323-993 PIPE HANDLE SET	1	INCLUD. 602
	602	985-597 BOLT M14	2	
	603	310-337 SUPER WASHER	1	
	604	332-797 WHEEL GUARD (FOR CUTTING)	1	