

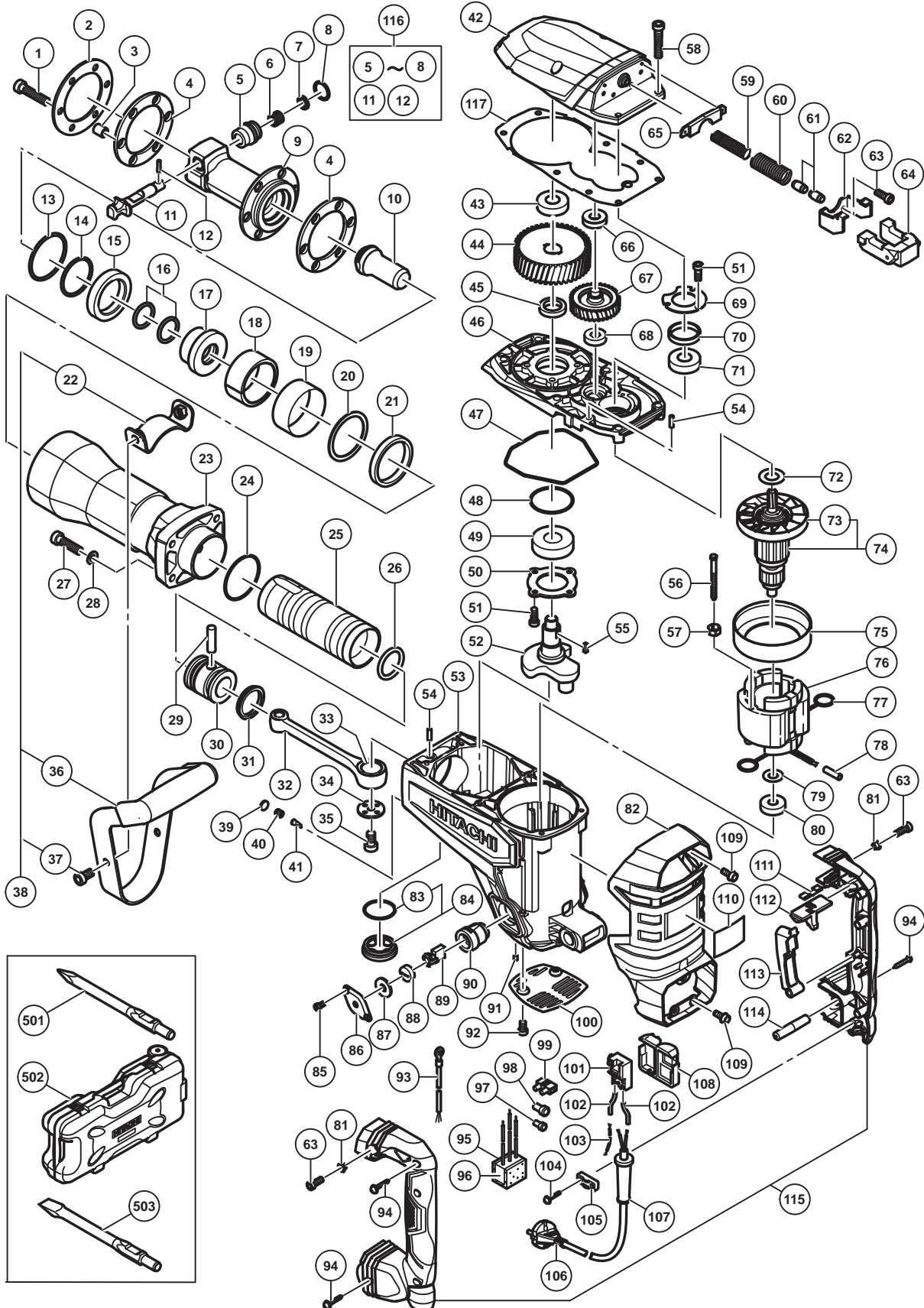
## ELECTRIC TOOL PARTS LIST

### DEMOLITION HAMMER

2016-8-19

Model H 65SB3

(E1)



## PARTS

H 65SB3

| ITEM NO. | CODE NO. | DESCRIPTION                            | NO. USED | REMARKS         |
|----------|----------|--|----------|-----------------|
| 1        | 323734   | NYLOCK HEX. SOCKET HD. BOLT M8 X 40    | 6        |                 |
| 2        | 339686   | DAMPER PLATE                           | 1        |                 |
| 3        | 323737   | COLLAR                                 | 6        |                 |
| 4        | 339685   | FRONT DAMPER                           | 2        |                 |
| 5        | 339688   | SPRING CASE                            | 1        |                 |
| 6        | 956975   | LEVER SPRING                           | 1        |                 |
| 7        | 998425   | DAMPER (B)                             | 1        |                 |
| 8        | 339689   | RING                                   | 1        |                 |
| 9        | 339683   | FRONT COVER                            | 1        |                 |
| 10       | 339682   | SECOND HAMMER                          | 1        |                 |
| 11       | 339687   | STOP LEVER                             | 1        |                 |
| 12       | 998426   | NEEDLE ROLLER                          | 1        |                 |
| 13       | 998428   | O-RING (C)                             | 1        |                 |
| 14       | 339684   | O-RING (B)                             | 1        |                 |
| 15       | 998433   | DAMPER (A)                             | 1        |                 |
| 16       | 339681   | O-RING                                 | 2        |                 |
| 17       | 339680   | SHANK SLEEVE                           | 1        |                 |
| 18       | 339679   | MOUTH                                  | 1        |                 |
| 19       | 956962   | MOUTH COVER                            | 1        |                 |
| 20       | 370894   | MOUTH WASHER (A)                       | 1        |                 |
| 21       | 370893   | URETHANE RING (A)                      | 1        |                 |
| 22       | 320374   | HANDLE STAY (W/NUT)                    | 1        |                 |
| 23       | 339678   | CYLINDER CASE                          | 1        |                 |
| 24       | 956996   | O-RING (1AS-60)                        | 1        |                 |
| 25       | 339677   | STRIKER                                | 1        |                 |
| 26       | 998414   | O-RING (A)                             | 1        |                 |
| 27       | 323734   | NYLOCK HEX. SOCKET HD. BOLT M8 X 40    | 4        |                 |
| 28       | 323212   | BOLT WASHER M8 (BLACK)                 | 4        |                 |
| 29       | 944928   | PISTON PIN                             | 1        |                 |
| 30       | 339676   | PISTON                                 | 1        |                 |
| 31       | 998415   | OIL SEAL (A)                           | 1        |                 |
| 32       | 998434   | CONNECTING ROD ASS'Y                   | 1        | INCLUD.33       |
| 33       | 944921   | NEEDLE BEARING (NTN 8E-NK 18/20 RDO)   | 1        |                 |
| 34       | 956955   | CRANK WASHER                           | 1        |                 |
| 35       | 996364   | SEAL LOCK HEX. SOCKET HD. BOLT M8 X 16 | 1        |                 |
| 36       | 306166   | GRIP                                   | 1        |                 |
| 37       | 320375   | NYLOCK HEX. SOCKET HD. BOLT M8 X 16    | 2        |                 |
| 38       | 306165   | SIDE HANDLE ASS'Y                      | 1        | INCLUD.22,36,37 |
| 39       | 324544   | FELT PACKING (B)                       | 1        |                 |
| 40       | 338313   | CAP SCREW                              | 1        |                 |
| 41       | 995396   | VALVE                                  | 1        |                 |
| 42       | 339674   | GEAR COVER                             | 1        |                 |
| 43       | 6302VV   | BALL BEARING 6302VVCMP2L               | 1        |                 |
| 44       | 339672   | FINAL GEAR                             | 1        |                 |
| 45       | 944915   | DISTANCE RING (B)                      | 1        |                 |
| 46       | 339669   | INNER COVER                            | 1        |                 |
| 47       | 323725   | SEAL RING                              | 1        |                 |
| 48       | 331244   | O-RING                                 | 1        |                 |
| 49       | 6205DD   | BALL BEARING 6205DDCMP2L               | 1        |                 |
| 50       | 956949   | BEARING COVER                          | 1        |                 |

**PARTS**

H 65SB3

| ITEM NO. | CODE NO. | DESCRIPTION                              | NO. USED | REMARKS                            |
|----------|----------|--|----------|------------------------------------|
| 51       | 990079   | SEAL LOCK HEX. SOCKET HD. BOLT M5 X 16   | 7        |                                    |
| 52       | 339671   | CRANK SHAFT                              | 1        |                                    |
| 53       | 339665   | HOUSING ASS'Y                            | 1        | INCLUD.90,91                       |
| 54       | 944918   | PIN D5 X 15.8                            | 2        |                                    |
| 55       | 931008   | FEATHER KEY 4 X 4 X 12                   | 1        |                                    |
| 56       | 960251   | HEX. HD. TAPPING SCREW D5 X 65           | 2        |                                    |
| 57       | 956764   | SPECIAL WASHER                           | 2        |                                    |
| 58       | 322494   | SEAL LOCK HEX. SOCKET HD. BOLT M6 X 40   | 6        |                                    |
| 59       | 339697   | HANDLE SPRING (B)                        | 1        |                                    |
| 60       | 339696   | HANDLE SPRING (A)                        | 1        |                                    |
| 61       | 310124   | HANDLE DAMPER                            | 2        |                                    |
| 62       | 339695   | HANDLE GUIDE                             | 1        |                                    |
| 63       | 990079   | SEAL LOCK HEX. SOCKET HD. BOLT M5 X 16   | 4        |                                    |
| 64       | 339698   | HANDLE WEIGHT                            | 1        |                                    |
| 65       | 339694   | HANDLE STOPPER                           | 1        |                                    |
| 66       | 6201VV   | BALL BEARING 6201VV                      | 1        |                                    |
| 67       | 339673   | COUNTER GEAR                             | 1        |                                    |
| 68       | 6001VV   | BALL BEARING 6001VV                      | 1        |                                    |
| 69       | 944911   | BEARING COVER (A)                        | 1        |                                    |
| 70       | 339670   | DISTANCE RING (A)                        | 1        |                                    |
| 71       | 6203DD   | BALL BEARING 6203DDCMPS2L                | 1        |                                    |
| 72       | 333222   | BEARING WASHER                           | 1        |                                    |
| 73       | 333196   | FAN                                      | 1        |                                    |
| * 74     | 361024C  | ARMATURE ASS'Y 110V                      | 1        | INCLUD.73                          |
| * 74     | 361024E  | ARMATURE ASS'Y 220V-230V                 | 1        | INCLUD.73                          |
| * 74     | 361024F  | ARMATURE ASS'Y 240V                      | 1        | INCLUD.73                          |
| 75       | 339668   | FAN GUIDE                                | 1        |                                    |
| * 76     | 340928C  | STATOR ASS'Y 110V                        | 1        | INCLUD.77                          |
| * 76     | 340928E  | STATOR ASS'Y 220V-230V                   | 1        | INCLUD.77                          |
| * 76     | 340928H  | STATOR ASS'Y 220V-230V                   | 1        | INCLUD.77 FOR THA,INA,SIN,UAE,IND  |
| * 76     | 340928F  | STATOR ASS'Y 240V                        | 1        | INCLUD.77                          |
| * 76     | 340928J  | STATOR ASS'Y 240V                        | 1        | INCLUD.77 FOR MAL                  |
| 77       | 945932   | BRUSH TERMINAL                           | 2        |                                    |
| 78       | 322530   | VINYL TUBE L55                           | 1        |                                    |
| 79       | 944954   | BEARING WASHER                           | 1        |                                    |
| 80       | 6201DD   | BALL BEARING 6201DDCMPS2L                | 1        |                                    |
| 81       | 991711   | DISTANCE PIECE (B)                       | 2        |                                    |
| 82       | 339692   | BACK COVER                               | 1        |                                    |
| 83       | 980717   | O-RING (S-38)                            | 1        |                                    |
| 84       | 990945   | OIL CAP ASS'Y                            | 1        | INCLUD.83                          |
| 85       | 877838   | SEAL LOCK HEX. SOCKET HD. BOLT M4 X 8    | 4        |                                    |
| 86       | 323727   | CAP COVER                                | 2        |                                    |
| 87       | 944960   | CAP RUBBER                               | 2        |                                    |
| 88       | 940540   | BRUSH CAP                                | 2        |                                    |
| 89       | 999086   | CARBON BRUSH (AUTO STOP TYPE) (1 PAIR)   | 2        |                                    |
| 90       | 956984   | BRUSH HOLDER                             | 2        |                                    |
| 91       | 938477   | HEX. SOCKET SET SCREW M5 X 8             | 2        |                                    |
| 92       | 991690   | SEAL LOCK HEX. SOCKET HD. BOLT M5 X 12   | 2        |                                    |
| * 93     | 994190   | INTERNAL WIRE                            | 1        | FOR EUROPE,AUS,NZL,GBR,SAF,RUS,CHN |
| 94       | 307028   | TAPPING SCREW (W/FLANGE) D4 X 25 (BLACK) | 5        |                                    |

**PARTS**

H 65SB3

| ITEM NO. | CODE NO. | DESCRIPTION | NO. USED                           | REMARKS |  |
|----------|----------|-------------|------------------------------------|---------|--|
| *        | 95       | 930153      | SUPPORT (B)                        | 1       | FOR EUROPE,AUS,NZL,GBR,SAF,RUS,CHN                 |
| *        | 96       | 370895      | NOISE SUPPRESSOR                   | 1       | FOR EUROPE,AUS,NZL,GBR,SAF,RUS,CHN                 |
| *        | 97       | 959140      | CONNECTOR 50091 (10 PCS.)          | 1       | FOR EUROPE,AUS,NZL,GBR,SAF,RUS,CHN                 |
|          | 98       | 959141      | CONNECTOR 50092 (10 PCS.)          | 1       |  |
| *        | 99       | 938307      | PILLAR TERMINAL                    | 1       | FOR EUROPE,AUS,NZL,GBR,SAF,RUS,CHN                 |
|          | 100      | 339675      | TAIL COVER                         | 1       |  |
|          | 101      | 337051      | SWITCH                             | 1       |  |
|          | 102      | 996438      | VINYL TUBE (A) (I.D.7 X T0.5 X 50) | 2       |  |
| *        | 103      | 337055      | INTERNAL WIRE (BLACK)              | 1       | FOR EUROPE,AUS,NZL,GBR(230V),SAF,RUS,CHN           |
| *        | 103      | 337054      | INTERNAL WIRE (WHITE)              | 1       | FOR GBR (110V)                                     |
|          | 104      | 984750      | TAPPING SCREW (W/FLANGE) D4 X 16   | 2       |  |
|          | 105      | 960266      | CORD CLIP                          | 1       |  |
| *        | 106      | 500390Z     | CORD                               | 1       | (CORD ARMOR D10.7)                                 |
| *        | 106      | 500424Z     | CORD                               | 1       | (CORD ARMOR D8.2)<br>FOR SIN (230V),UAE (230V),MAL |
| *        | 106      | 930053      | CORD                               | 1       | (CORD ARMOR D10.7) FOR SIN(110V),UAE(110V)         |
| *        | 106      | 500408Z     | CORD                               | 1       | (CORD ARMOR D8.2) FOR AUS,NZL                      |
| *        | 106      | 500235Z     | CORD                               | 1       | (CORD ARMOR D8.2) FOR INA,IND                      |
| *        | 106      | 500446Z     | CORD                               | 1       | (CORD ARMOR D10.7) FOR GBR (230V)                  |
| *        | 106      | 500467Z     | CORD                               | 1       | (CORD ARMOR D10.7) FOR GBR (110V)                  |
| *        | 106      | 500206Z     | CORD                               | 1       | (CORD ARMOR D10.7) FOR THA                         |
| *        | 106      | 500457Z     | CORD                               | 1       | (CORD ARMOR D10.7) FOR CHN                         |
| *        | 107      | 958049      | CORD ARMOR D8.2                    | 1       |  |
| *        | 107      | 940778      | CORD ARMOR D10.7                   | 1       |  |
|          | 108      | 337052      | SUPPORT                            | 1       |  |
|          | 109      | 339693      | NYLOCK BOLT (W/FLANGE) M5          | 4       |  |
|          | 110      |             | NAME PLATE                         | 1       |  |
|          | 111      | 339691      | LEAF SPRING                        | 1       |  |
|          | 112      | 339690      | PUSHING BUTTON                     | 1       |  |
|          | 113      | 337058      | SWITCH LEVER                       | 1       |  |
|          | 114      | 338175      | HANDLE SHAFT                       | 1       |  |
|          | 115      | 339699      | HANDLE (A).(B) SET                 | 1       |  |
|          | 116      | 339700      | STOP LEVER ASS'Y                   | 1       | INCLUD.5-8,11,12                                   |
|          | 117      | 370913      | SEAL PACKING                       | 1       |  |
|          |          |             |                                    |         |  |
|          |          |             |                                    |         |  |
|          |          |             |                                    |         |  |
|          |          |             |                                    |         |  |
|          |          |             |                                    |         |  |
|          |          |             |                                    |         |  |
|          |          |             |                                    |         |  |
|          |          |             |                                    |         |  |
|          |          |             |                                    |         |  |
|          |          |             |                                    |         |  |
|          |          |             |                                    |         |  |
|          |          |             |                                    |         |  |
|          |          |             |                                    |         |  |
|          |          |             |                                    |         |  |
|          |          |             |                                    |         |  |

**STANDARD ACCESSORIES**

H 65SB3

| ITEM NO. | CODE NO. | DESCRIPTION                | NO. USED | REMARKS |
|----------|----------|----------------------------|----------|---------|
| 501      | 944961   | BULL POINT 410MM           | 1        |         |
| 502      | 339664   | CASE (PLASTIC)             | 1        |         |
| * 503    | 401990   | CHISEL (HEX.30) W35 X 410L | 1        | FOR AUS |
|          |          |                            |          |         |
|          |          |                            |          |         |
|          |          |                            |          |         |
|          |          |                            |          |         |
|          |          |                            |          |         |
|          |          |                            |          |         |
|          |          |                            |          |         |
|          |          |                            |          |         |
|          |          |                            |          |         |
|          |          |                            |          |         |
|          |          |                            |          |         |
|          |          |                            |          |         |
|          |          |                            |          |         |

**OPTIONAL ACCESSORIES**

| ITEM NO. | CODE NO. | DESCRIPTION                              | NO. USED | REMARKS |
|----------|----------|--|----------|---------|
| 601      | 944962   | COLD CHISEL 410MM (HEX. SHANK TYPE)      | 1        |         |
| 602      | 944964   | CUTTER W75 X 410L (ROUND SHANK TYPE)     | 1        |         |
| 603      | 944966   | RAMMER SHANK (HAMMER)                    | 1        |         |
| 604      | 944965   | RAMMER 200MM                             | 1        |         |
| 605      | 957154   | SCOOP 380L (ROUND SHANK TYPE)            | 1        |         |
| 606      | 336375   | WHEEL SET                                | 1        |         |
| 607      | 337337   | WHEEL SHAFT SET                          | 1        |         |
| 608      | 337338   | LATCH SET (2 PCS.)                       | 2        |         |
| 609      | 402616   | HAMMER TROLLEY                           | 1        |         |
| 610      | 981840   | GREASE (A) FOR HAMMER.HAMMER DRILL (30G) | 1        |         |
| 611      | 308471   | GREASE FOR HAMMER.HAMMER DRILL (70G)     | 1        |         |
| 612      | 930035   | GREASE (SEP-3A) (100G)                   | 1        |         |
| 613      | 980927   | GREASE FOR HAMMER.HAMMER DRILL (500G)    | 1        |         |
|          |          |  |          |         |
|          |          |  |          |         |
|          |          |  |          |         |
|          |          |  |          |         |
|          |          |  |          |         |
|          |          |  |          |         |
|          |          |  |          |         |
|          |          |  |          |         |
|          |          |  |          |         |
|          |          |  |          |         |
|          |          |  |          |         |
|          |          |  |          |         |
|          |          |  |          |         |
|          |          |  |          |         |
|          |          |  |          |         |
|          |          |  |          |         |
|          |          |  |          |         |
|          |          |  |          |         |
|          |          |  |          |         |