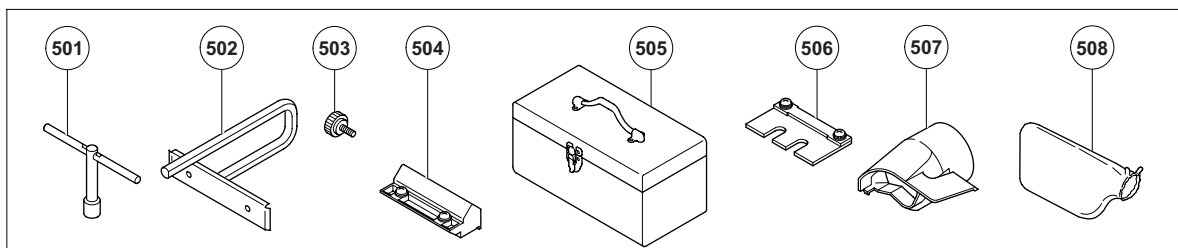
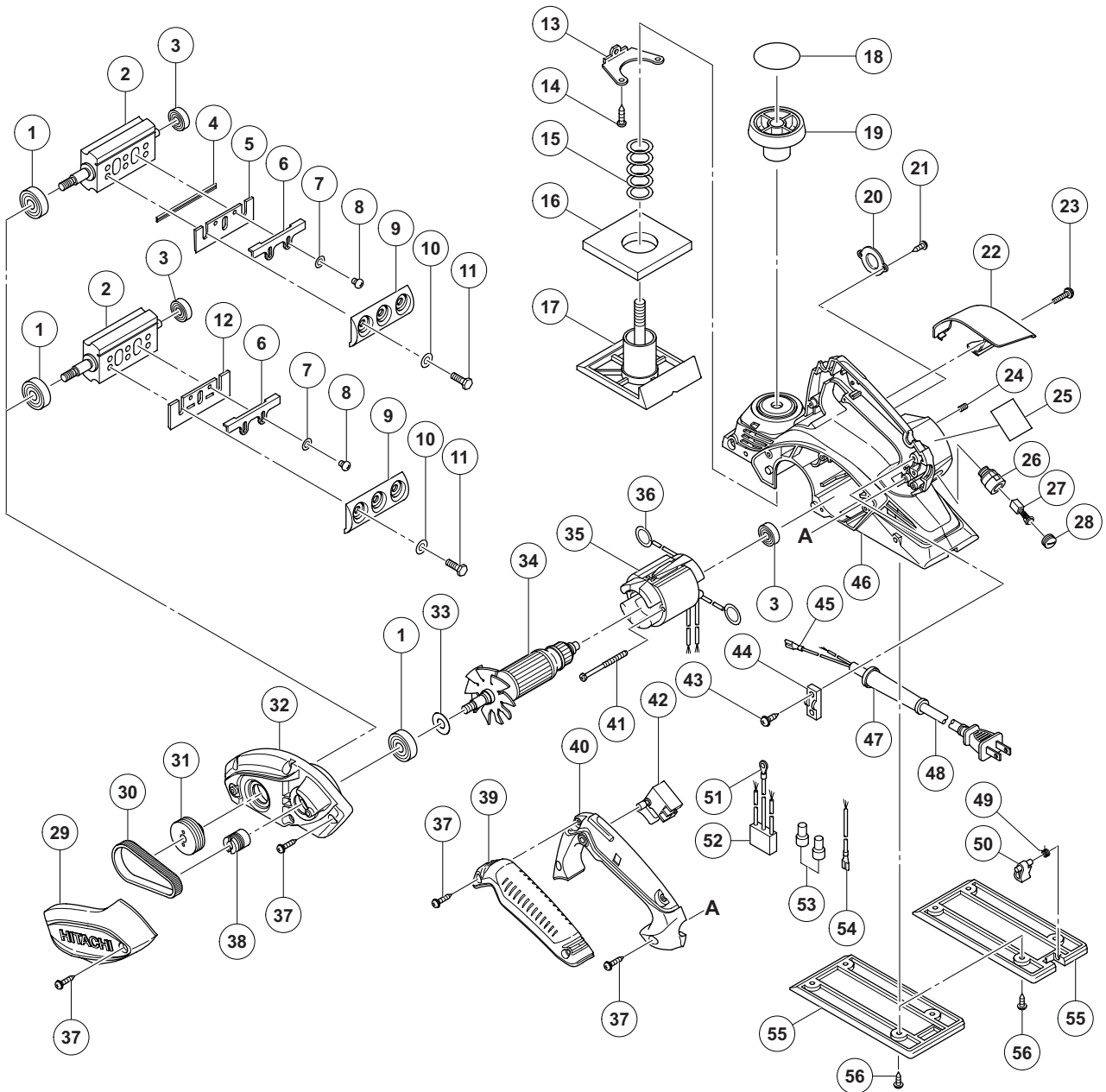


ELECTRIC TOOL PARTS LIST

PLANER Model P 20ST

2012·7·17

(E1)



PARTS

P 20ST

ITEM NO.	CODE NO.	DESCRIPTION	NO. USED	REMARKS
1	620-0VV	BALL BEARING 6200VVCMP2L	2	
* 2	334-480	CUTTER BLOCK ASS'Y (W/B.B)	1	INCLUD. 1, 3 EXCEPT FOR IND
3	608-VVM	BALL BEARING 608VVC2PS2L	2	
* 4	879-418	PLANER BLADES (1 PAIR)	2	FOR DOUBLE EDGE BLADE TYPE
* 5	334-478	SET PLATE (B) (1 PAIR)	2	FOR DOUBLE EDGE BLADE TYPE
* 6	314-754	SET PLATE (A)	2	EXCEPT FOR IND
* 7	949-423	WASHER M4 (10 PCS.)	4	EXCEPT FOR IND
* 8	949-213	MACHINE SCREW M4 X 5 (10 PCS.)	4	EXCEPT FOR IND
* 9	316-398	BLADE HOLDER (1 PAIR)	2	EXCEPT FOR IND
10	334-706	WASHER 65MN T0.5	6	
11	334-707	BOLT M6	6	
* 12	314-746	PLANER BLADES 82 MM (1 PAIR)	2	EXCEPT FOR DOUBLE EDGE BLADE TYPE
13	958-945	SCREW PLATE	1	
14	954-004	TAPPING SCREW D4 X 16	1	
15	958-709	SPRING	1	
16	958-708	RUBBER PACKING	1	
17	334-738	FRONT BASE	1	
18		SCALE	1	
19	942-328	KNOB	1	
20	334-492	BEARING COVER	1	
21	309-470	TAPPING SCREW (W/FLANGE) D4 X 12 (BLACK)	2	
22	334-501	TIP COVER	1	
23	333-163	MACHINE SCREW (BLACK) M4 X 16	1	
24	938-477	HEX. SOCKET SET SCREW M5 X 8	2	
25		NAME PLATE	1	
26	957-571	BRUSH HOLDER	2	
27	999-021	CARBON BRUSH (1 PAIR)	2	
28	931-266	BRUSH CAP	2	
29	334-487	BELT COVER	1	
30	958-718	BELT	1	
31	334-491	PULLEY (B)	1	
32	334-716	END BRACKET	1	
33	334-713	WASHER (A)	1	
* 34	360-942H	ARMATURE 110 V	1	
* 34	360-942U	ARMATURE ASS'Y 120 V	1	INCLUD. 1, 3
* 34	360-942D	ARMATURE 127 V	1	
* 34	360-942G	ARMATURE 220 V	1	
* 34	360-942E	ARMATURE 230 V	1	
* 34	360-942F	ARMATURE 240 V	1	
* 35	340-834C	STATOR ASS'Y 110 V	1	INCLUD. 36
* 35	340-835C	STATOR ASS'Y 110 V-120 V	1	INCLUD. 36 FOR USA, CAN (120 V), SAU, UAE (110 V)
* 35	340-835D	STATOR ASS'Y 127 V	1	INCLUD. 36
* 35	340-834E	STATOR ASS'Y 220 V-230 V	1	INCLUD. 36
* 35	340-835E	STATOR ASS'Y 220 V-230 V	1	INCLUD. 36 FOR BRA (220 V), PAN (220 V), PHI, INA, SIN, HKG, IND, ISR, UAE (220 V-230 V)
* 35	340-834F	STATOR ASS'Y 240 V	1	INCLUD. 36
* 35	340-835F	STATOR ASS'Y 240 V	1	INCLUD. 36 FOR MAL, UAE (240 V)
36	931-867	BRUSH TERMINAL	2	
37	301-653	TAPPING SCREW (W/FLANGE) D4 X 20 (BLACK)	10	
38	334-490	PULLEY (A)	1	

