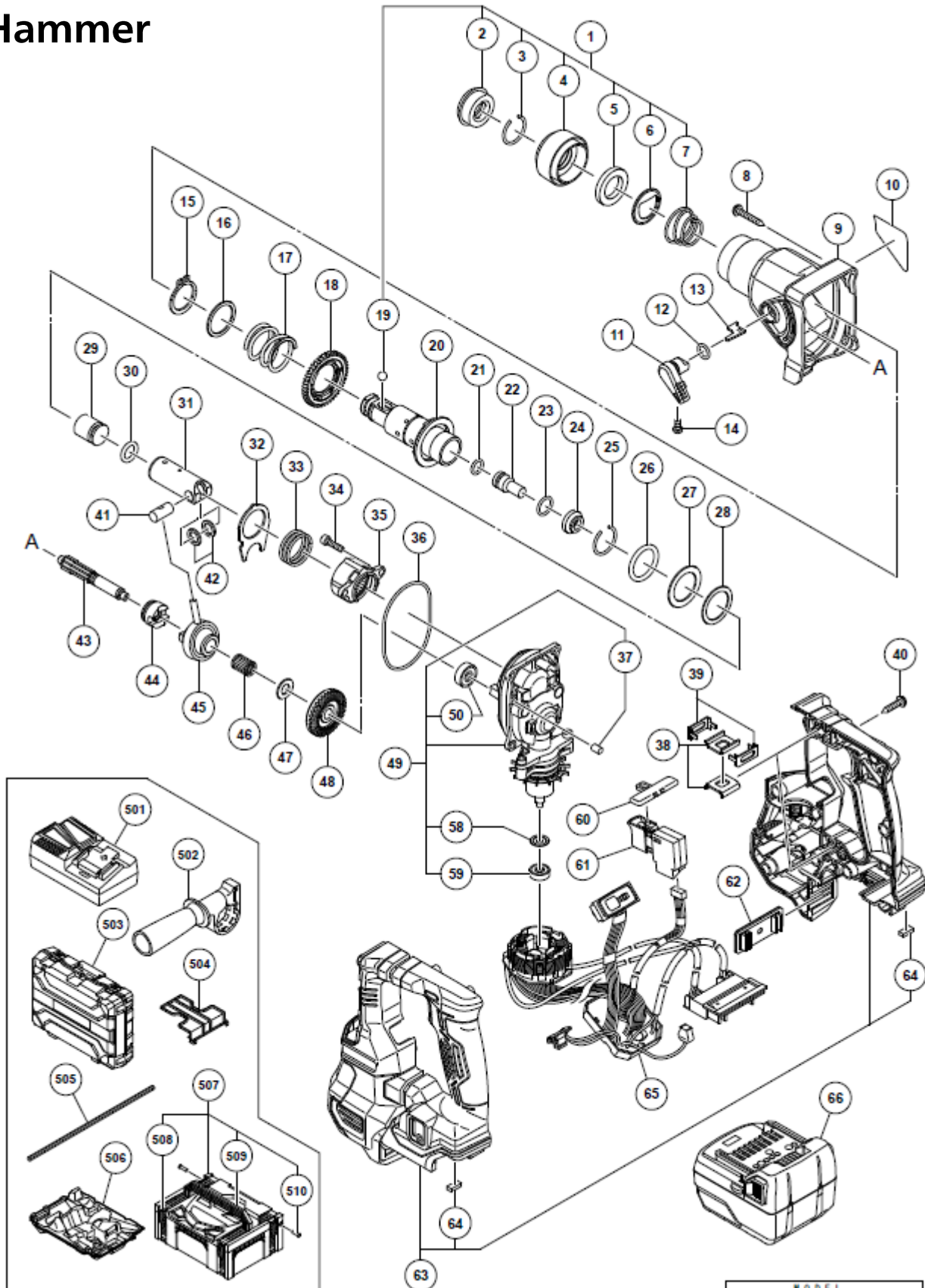


# DH18DPA(H2Z) 18V Slide Brushless SDS Plus Rotary Hammer

## Hammer



MODEL  
DH18DPA

Item ref	Code no.	Description	Qty	Notes
1	376603	GRIP SET	1	INCLUD.2-7.19
2	306345	FRONT CAP	1	
3	306340	STOPPER RING	1	
4	376338	GRIP	1	
5	324528	BALL HOLDER	1	
6	374435	HOLDER PLATE	1	
7	322812	HOLDER SPRING	1	
8	305490	TAPPING SCREW (W/FLANGE) D4X30 (BLACK)	4	
9	376342	GEAR COVER	1	
10		NAME PLATE	1	
11	376334	CHANGE LEVER	1	
12	872654	O-RING (1AP-10)	1	
13	327875	STOPPER	1	
14	949213	MACHINE SCREW M4X5 (10 PCS.)	1	
15	965469	RETAINING RING FOR D25 SHAFT	1	
16	944274	WASHER	1	
17	376743	SPRING (A)	1	
18	376676	SECOND GEAR	1	
19	335300	STEEL BALL D7.0 (10 PCS.)	1	
20	376335	CYLINDER	1	
21	301672	O-RING (B)	1	
22	376336	SECOND HAMMER	1	
23	311814	O-RING (P-15)	1	
24	376337	HAMMER HOLDER	1	
25	376673	STOPPER RING	1	
26	376339	DAMPER	1	
27	376340	THRUST WASHER (A)	1	
28	376674	THRUST WASHER (B)	1	
29	376325	STRIKER	1	
30	306326	O-RING (A)	1	
31	376326	PISTON	1	
32	376327	THRUST PLATE	1	
33	306976	SPRING (B)	1	
34	984509	SEAL LOCK HEX. SOCKET HD. BOLT M5X14	2	
35	376321	INNER COVER (B)	1	
36	327870	O-RING (A)	1	
37	376318	FELT PACKING (A)	1	
38	376328	HANDLE PLATE (A)	4	
39	376329	HANDLE PLATE (B)	4	
40	301653	TAPPING SCREW (W/FLANGE) D4X20 (BLACK)	11	
41	306322	PISTON PIN	1	
42	328660	WASHER	2	
43	376322	SECOND SHAFT (A)	1	
44	376593	CLUTCH	1	
45	325585	RECIPROCATING BEARING	1	
46	306320	NEEDLE CAGE	1	
47	376675	THRUST WASHER (C)	1	
48	376324	BEVEL GEAR	1	
49	377012	INNER COVER ASS'Y (A)	1	INCLUD.37.50.58.59
50	626VVM	BALL BEARING 626VVC2PS2L	1	

Item ref	Code no.	Description	Qty	Notes
58	376332	DUST WASHER (B)	1	
59	333826	BALL BEARING 625DD	1	
60	324225	PUSHING BUTTON (B)	1	
61	376527	DC-SPEED CONTROL SWITCH	1	
62	376703	BATTERY RUBBER	1	
63	376346	HOUSING (A).(B) SET	1	INCLUD.64
64	376702	DAMPER (A)	2	
65	376355	WIRING	1	
*66	376029	BATTERY BSL 1850C (EUROPE.AUS.NZL)	2	INCLUD.504
		STANDARD ACCESSORIES		
501		CHARGER (MODEL UC 18YFSL)	1	
502	324548	SIDE HANDLE	1	
504	329897	BATTERY COVER	1	
505	303709	DEPTH GAUGE	1	
506	376557	INNER TRAY	1	
507	336471	CASE ASS'Y (STACKABLE 2)	1	INCLUD.508-510
508	336472	LATCH	4	
509	336473	HANDLE	1	
510	336474	HINGE	2	
		OPTIONAL ACCESSORIES		
601	303332	HAMMER DRILL CHUCK SET 13MM	1	INCLUD.602.603
602	303334	CHUCK HANDLE	1	
603	303335	RUBBER CAP	1	
604	321825	DRILL CHUCK AND ADAPTER SET	1	INCLUD.605.606
605	303623	CHUCK ADAPTER (G) (SDS PLUS)	1	
606	321814	DRILL CHUCK 13VLRB-D	1	INCLUD.607.608
607	331966	FLAT HD. SCREW (LEFT HAND) M6X20	1	
608	987576	CHUCK WRENCH FOR 13VLRB-D.13VLR-D	1	
609	971787	DUST CUP	1	
610	372200	HOOK	1	
611	337357	TRUSS HD. SCREW M4 (BLACK)	1	
612	335782	GREASE FOR ROTARY HAMMER (60G)	1	
613	335781	GREASE FOR ROTARY HAMMER (500G)	1	
614	376690	GREASE FOR CORDLESS ROTARY HAMMER (50G)	1	
615	306885	DUST COLLECTOR (B) ASS'Y	1	INCLUD.616
616	306910	SOCKET ADAPTER (B)	1	
617	321813	DRILL CHUCK 13VLD-D	1	INCLUD.602
618	971511Z	+ DRIVER BIT (A) NO.2 25L	1	
619	971512Z	+ DRIVER BIT (A) NO.3 25L	1	