

HIKOKI**CORDLESS ROTARY HAMMER DH18DPB**

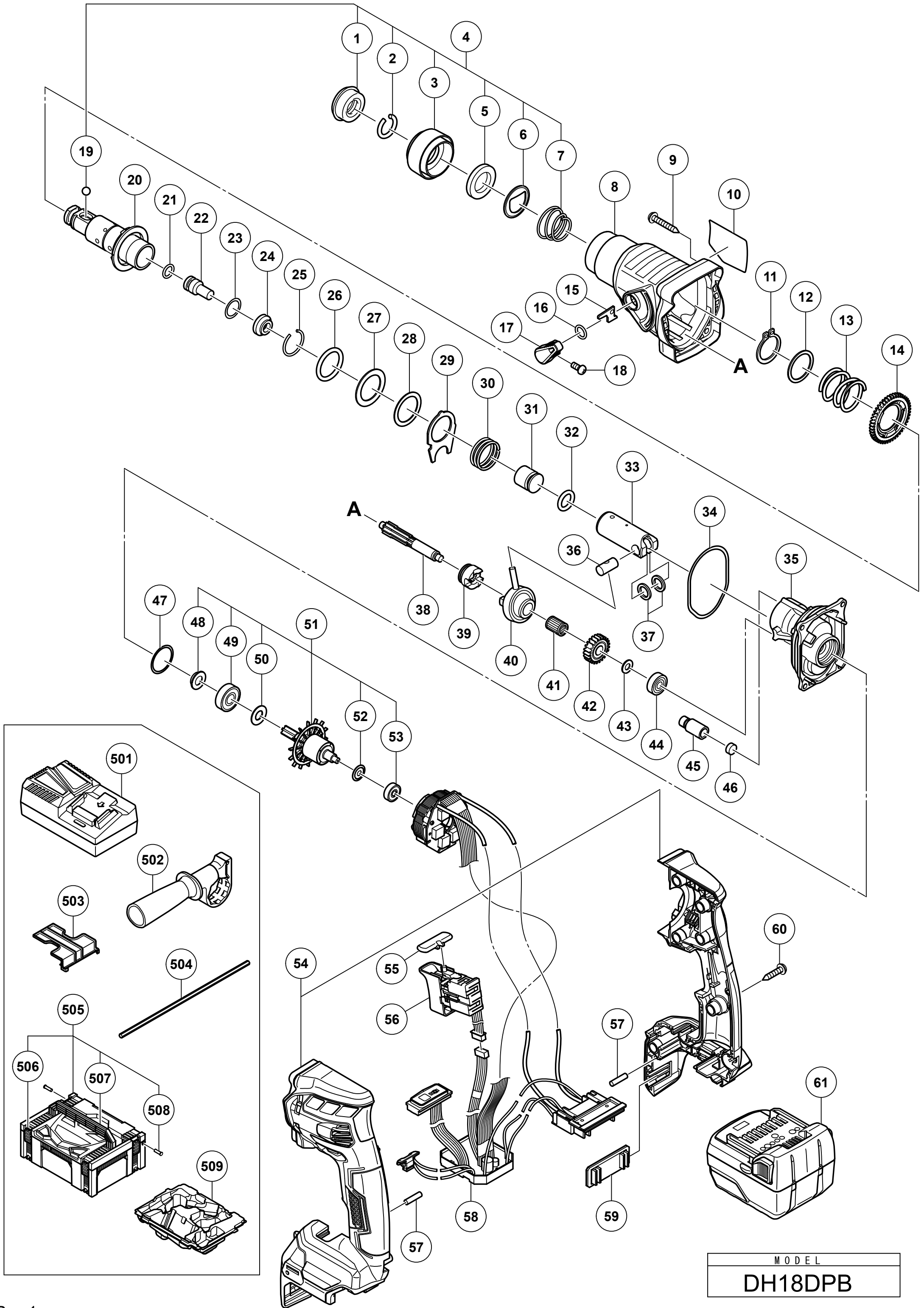
Item No.	Code No.	Description	No. Used	Remarks
1	306345	FRONT CAP	1	
2	306340	STOPPER RING	1	
3	376338	GRIP	1	
4	376603	GRIP SET	1	INCLUD. 1-3,5-7,19
5	324528	BALL HOLDER	1	
6	374435	HOLDER PLATE	1	
7	322812	HOLDER SPRING	1	
8	376588	GEAR COVER	1	
9	305490	TAPPING SCREW (W/FLANGE) D4X30 (BLACK)	4	
10		NAME PLATE	1	
11	965469	RETAINING RING FOR D25 SHAFT	1	
12	944274	WASHER	1	
13	376743	SPRING (A)	1	
14	376676	SECOND GEAR	1	
15	327875	STOPPER	1	
16	872654	O-RING (1AP-10)	1	
17	376334	CHANGE LEVER	1	
18	949213	MACHINE SCREW M4X5 (10 PCS.)	1	
19	335300	STEEL BALL D7.0 (10 PCS.)	1	
20	376335	CYLINDER	1	
21	301672	O-RING (B)	1	
22	376336	SECOND HAMMER	1	
23	311814	O-RING (P-15)	1	
24	376337	HAMMER HOLDER	1	
25	376673	STOPPER RING	1	
26	376339	DAMPER	1	
27	376340	THRUST WASHER (A)	1	
28	376674	THRUST WASHER (B)	1	
29	376327	THRUST PLATE	1	
30	306976	SPRING (B)	1	
31	376325	STRIKER	1	
32	306326	O-RING (A)	1	
33	376326	PISTON	1	
34	325583	O-RING	1	
35	376590	INNER COVER	1	
36	306322	PISTON PIN	1	
37	328660	WASHER	2	
38	376591	SECOND SHAFT	1	
39	376593	CLUTCH	1	
40	325585	RECIPROCATING BEARING	1	
41	306320	NEEDLE CAGE	1	
42	376687	FIRST GEAR	1	
43	995634	WASHER (B) D12.5	1	
44	626VVM	BALL BEARING 626VVC2PS2L	1	
45	334008	AIR CAP	1	
46	376789	FELT PACKING (D)	1	
47	878609	O-RING (S-24)	1	
48	306312	FRINGER	1	
49	609DDC	BALL BEARING 609DDC3PS2-L	1	
50	376788	DUST WASHER	1	
51	376667	ROTOR ASS'Y (A)	1	INCLUD. 48-50,52,53
52	376332	DUST WASHER (B)	1	
53	333826	BALL BEARING 625DD	1	

* ALTERNATIVE PARTS

HIKOKI**CORDLESS ROTARY HAMMER DH18DPB**

Item No.	Code No.	Description	No. Used	Remarks
54	376665	HOUSING (A).(B) SET	1	
55	322853	PUSHING BUTTON	1	
56	376670	SWITCH	1	
57	373041	REAR BUMPER	2	
58	376669	WIRING	1	
59	376746	BATTERY RUBBER	1	
60	301653	TAPPING SCREW (W/FLANGE) D4X20 (BLACK)	7	
61	376029	BATTERY BSL 1850C (EUROPE,AUS,NZL)	2	INCLUD.503
		STANDARD ACCESSORIES		
501		CHARGER (MODEL UC 18YFSL)	1	
502	324548	SIDE HANDLE	1	
503	329897	BATTERY COVER	1	
504	303709	DEPTH GAUGE	1	
505	336471	CASE ASS'Y (STACKABLE 2)	1	INCLUD.506-508
506	336472	LATCH	4	
507	336473	HANDLE	1	
508	336474	HINGE	2	
509	376671	INNER TRAY	1	
		OPTIONAL ACCESSORIES		
601	303332	HAMMER DRILL CHUCK SET 13MM	1	INCLUD.602,603
602	303334	CHUCK HANDLE	1	
603	303335	RUBBER CAP	1	
604	321825	DRILL CHUCK AND ADAPTER SET	1	INCLUD.605,606
605	303623	CHUCK ADAPTER (G) (SDS PLUS)	1	
606	321814	DRILL CHUCK 13VLRB-D	1	INCLUD.607,608
607	331966	FLAT HD. SCREW (LEFT HAND) M6X20	1	
608	987576	CHUCK WRENCH FOR 13VLB-D,13VLR-D	1	
609	971787	DUST CUP	1	
610	372200	HOOK	1	
611	337357	TRUSS HD. SCREW M4 (BLACK)	1	
612	335782	GREASE FOR ROTARY HAMMER (60G)	1	
613	335781	GREASE FOR ROTARY HAMMER (500G)	1	
614	376690	GREASE FOR CORDLESS ROTARY HAMMER (50G)	1	
615	306885	DUST COLLECTOR (B) ASS'Y	1	INCLUD.616
616	306910	SOCKET ADAPTER (B)	1	
617	321813	DRILL CHUCK 13VLD-D	1	INCLUD.602
618	971511Z	+ DRIVER BIT (A) NO.2 25L	1	
619	971512Z	+ DRIVER BIT (A) NO.3 25L	1	

* ALTERNATIVE PARTS



MODEL
DH18DPB