

HIKOKI**CORDLESS GRASS TRIMMER/BRUSH CUTTER CG3**

Item No.	Code No.	Description	No. Used	Remarks
1	373914	MV LABEL (B)	1	
*2	339250	TAPPING SCREW (W/FLANGE) D4X20	12	EXCEPT FOR MODEL (L)
*2	339250	TAPPING SCREW (W/FLANGE) D4X20	7	FOR MODEL (L)
3		NAME PLATE	1	
4	305574	HEX. SOCKET HD. BOLT (W/SP.WASHER) M5X16	2	
5	6601339	HEX. SOCKET HD. BOLT (W/SP.WASHER) M5X22	3	
6	377659	HEX. SOCKET HD. BOLT (W/SP.WASHER) M5X30	2	
7	377263	PIPE HOLDER	1	
8	939540	RETAINING RING FOR D10 SHAFT (10 PCS.)	1	
9	6000VV	BALL BEARING 6000VVCMP2L	2	
10	939554	RETAINING RING FOR D26 HOLE (10 PCS.)	1	
11	377268	GEAR SHAFT ASS'Y	1	INCLUD.12
12	939542	RETAINING RING FOR D12 SHAFT (10 PCS.)	1	
13	377262	MOTOR HOLDER	1	
14	377270	MOTOR ASS'Y	1	
15	377261	CONTROLLER	1	
16	377265	PANEL SHEET	1	
17		FERRITE CORE	1	
*18	6698943	BAND	3	EXCEPT FOR MODEL (L)
*18	6698943	BAND	2	FOR MODEL (L)
19	373913	MV LABEL (A)	1	
20	371907	SWITCH	1	
21	330771	PLATE	1	
22	377260	HOUSING (A).(B) SET	1	
*23	334541	HANDLE (A).(B) SET	1	EXCEPT FOR MODEL (L)
*24	334544	LEVER	1	EXCEPT FOR MODEL (L)
*25	332557	SPRING	1	EXCEPT FOR MODEL (L)
*26	377660	LOCK LEVER	1	EXCEPT FOR MODEL (L)
*27	323041	MACHINE SCREW M5X30 (BLACK)	1	EXCEPT FOR MODEL (L)
*28	377264	WIRE 895	1	EXCEPT FOR MODEL (L)
*29	335750	HANDLE RIGHT	1	EXCEPT FOR MODEL (L)
30	6600555	GEAR CASE ASS'Y 3BB (D)	1	INCLUD.4,31-33
31	949662	HEX. SOCKET HD. BOLT M5X25 (10 PCS.)	1	
32	6684737	BOLT (W/PLUS) M6X8	1	
33	6601354	CUTTER HOLDER (A)	1	
34	335234	NYLON HEAD	1	INCLUD.35
35	335235	NYLON CORD D2.0X4M	1	
*36	302012	NUT M5 (BLACK)	1	EXCEPT FOR MODEL (L)
*37	305812	TAPPING SCREW (W/FLANGE) D4X16 (BLACK)	2	FOR MODEL (L)
*38	995096	MACHINE SCREW (W/WASHERS) M5X20 (BLACK)	2	FOR MODEL (L)
*39	6600566	HANDLE (B)	1	FOR MODEL (L)
*40	6600567	TRIGGER LOCKOUT	1	FOR MODEL (L)
*41	6600568	THROTTLE LEVER	1	FOR MODEL (L)
*42	6696489	SPRING (A)	1	FOR MODEL (L)
*43	377259	WIRE 300	1	FOR MODEL (L)
*44	377258	HANDLE (A)	1	FOR MODEL (L)
*45	6600538	GRIP (LOOP)	1	FOR MODEL (L)
*46	6684709	HEX. HOLE BOLT M5X25/S	4	EXCEPT FOR MODEL (L)
*47	6600500	HANDLE HOLDER (A)	1	EXCEPT FOR MODEL (L)
*48	6600501	HANDLE HOLDER (B)	1	EXCEPT FOR MODEL (L)
49	6600504	HANGER	1	
50	949236	MACHINE SCREW M5X10 (10 PCS.)	1	
*51	6689292	CUSHION PAD	1	EXCEPT FOR MODEL (L)

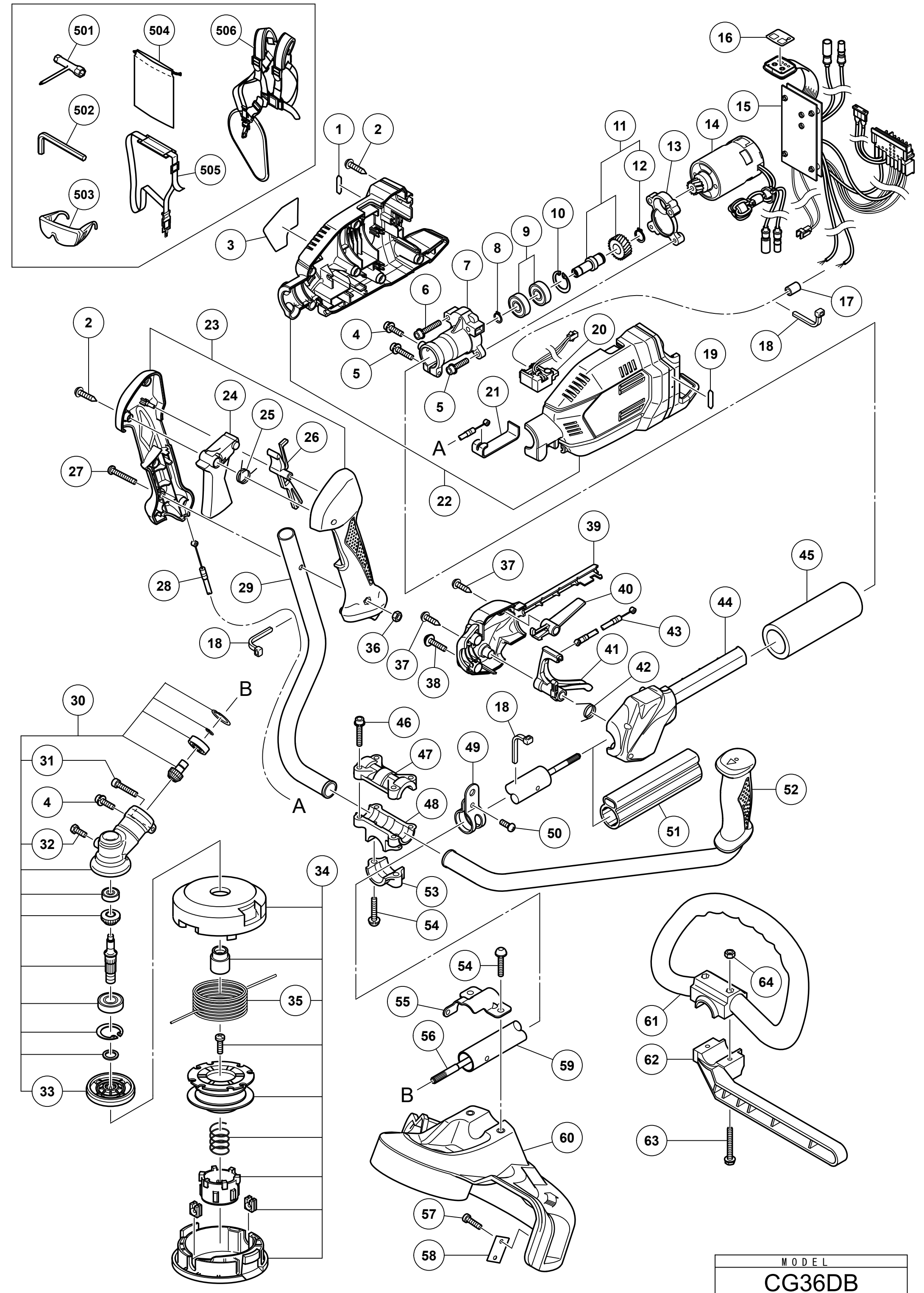
* ALTERNATIVE PARTS



CORDLESS GRASS TRIMMER/BRUSH CUTTER CG3

Item No.	Code No.	Description	No. Used	Remarks
*52	6698638	HANDLE (LEFT)	1	EXCEPT FOR MODEL (L)
*53	6696578	HANDLE HOLDER (C)	1	EXCEPT FOR MODEL (L)
*54	6684714	HEX. HOLE BUTTON BOLT M6X25	4	EXCEPT FOR MODEL (L)
*54	6684714	HEX. HOLE BUTTON BOLT M6X25	2	FOR MODEL (L)
55	333321	COVER BRACKET	1	
56	377257	DRIVE SHAFT	1	
57	6684751	TAPPING SCREW 4X14	1	
58	6684750	KNIFE	1	
59	377256	MAIN PIPE	1	
60	377266	GUARD (EU)	1	
*61	6696975	LOOP HANDLE	1	FOR MODEL (L)
*62	6696973	BARRIER	1	FOR MODEL (L)
*63	6696974	BOLT (BLACK) M6	2	FOR MODEL (L)
*64	949556	NUT M6 (10 PCS.)	2	FOR MODEL (L)
STANDARD ACCESSORIES				
501	6684764	BOX WRENCH (HEX. SOCKET 17/19)	1	
502	6684813	HEX. BAR WRENCH 4MM	1	
503	875769	PROTECTIVE GLASSES	1	
504	6600923	TOOL BAG	1	
*505	330787	SHOULDER BELT	1	FOR AUS, NZL
*506	6699137	SHOULDER BELT ASS'Y W	1	FOR EUROPE

* ALTERNATIVE PARTS



MODEL
CG36DB