

HIKOKI

CORDLESS NAILER NT1865DSA

Item No.	Code No.	Description	No. Used	Remarks
1	382121	CHARGE CAP COVER	1	
2	382122	TOP COVER	1	
3	382123	CHARGE CAP	1	
4	884112	O-RING (I.D 10.7)	1	
5	382124	VALVE CORE CUSHION	1	
6	382125	VALVE CORE	1	
7	382803	CUSHION (A)	2	
8	382804	CHAMBER COVER ASS'Y	1	INCLUD. 6,7
9	382128	O-RING (I.D. 66.4)	1	
10	378107	SPECIAL NUT M36 (B)	1	
11	382127	O-RING (I.D. 64.5)	1	
12	382129	CHAMBER BASE	1	
13	949757	HEX. SOCKET HD. BOLT M5X20 (10 PCS.)	4	
14	371042	O-RING (I.D 32.99)	1	
15	382130	CYLINDER	1	
16	382805	PISTON ASS'Y	1	INCLUD. 17-20
17	382131	SLIDE RING	2	
18	382132	X-RING	1	
19	382133	O-RING (I.D. 21.7)	1	
20	382175	PISTON	1	
21	382135	PISTON BUMPER	1	
22	382137	RUBBER CUSHION (B)	1	
23	382176	NOSE COVER	1	
24	382156	RETAINING RING D47	1	
25	382155	BB HOLDER	1	
26	371033	BALL BEARING 6900VVCM	1	
27	371032	WASHER (A)	1	
28	371027	WHEEL SPRING (A)	1	
29	371030	NEEDLE ROLLER D3	6	
30	371031	NEEDLE ROLLER D4.5	1	
31	382140	PIN WHEEL	1	
32	371028	WHEEL SPRING (B)	1	
33	382141	POSITION DETECTOR	1	
34	6901VV	BALL BEARING 6901VV	1	
35	382798	PIN (A)	1	
36	382797	PIN WHEEL ASS'Y	1	INCLUD. 26-35
37	382799	NEEDLE ROLLER D4	2	
38	382139	PUSHING LEVER SPRING	1	
39	382177	PUSHING LEVER ARM (B) ASS'Y	1	INCLUD. 40,41
40	877371	NYLON NUT M5	1	
41	382149	PUSHING LEVER PIECE	1	
42	382152	RATCHET SPRING	2	
43	872822	O-RING (S-5)	1	
44	880319	SHAFT RING	1	
45	877371	NYLON NUT M5	1	
46	382183	LOCK LEVER COVER	1	
47	382159	NYLOK BOLT M5X20	3	
48	382163	LOCK LEVER	1	
49	949685	ROLL PIN D3X20 (10 PCS.)	1	
50	887846	ROLL PIN D3X28	1	
51	382182	GUIDE PLATE (A)	1	
52	382462	ROLL PIN D4X16	1	
53	382181	GUIDE PLATE (B)	1	

* ALTERNATIVE PARTS

HIKOKI

CORDLESS NAILER NT1865DSA

Item No.	Code No.	Description	No. Used	Remarks
54	382184	PUSHING LEVER (A)	1	
55	382165	NOSE CAP	3	
56	382148	NEEDLE PIN D3X6	1	
57	382752	HEX. HD. BOLT (LEFT) M3X6	1	
58	382151	ADJUSTER	1	
59	382178	PUSHING LEVER (B)	1	
60	382179	PUSHING LEVER ARM (A)	1	
61	382180	BLADE GUIDE	1	
62	382753	PUSHING LEVER SHAFT	1	
63	6696839	WIRE BAND	1	
64	382464	STOPPER SPRING	1	
65	382161	MAGNET HOLDER	1	
66	382174	SLEEVE	1	
67	331184	NYLOCK HEX. SOCKET HD. BOLT M3	2	
68	382755	SENSOR CASE (D)	1	
69	382187	SENSOR COVER	1	
70	382173	SLEEVE	1	
71		NAME PLATE	1	
72	313687	TAPPING SCREW (W/FLANGE) D3X16 (BLACK)	15	
73	371011	RUBBER CUSHION (B)	2	
74	373041	REAR BUMPER	2	
75	371020	O-RING (I.D 2.5)	2	
76	332000	SPRING (T)	1	
77	371021	TRIGGER	1	
78	371019	SWITCH CABLE (A)	1	
79	331790	LEVER (C)	1	
*80	341205	WIRING ASS'Y	1	
*81	380082	BATTERY BSL 36A18X (EUROPE,AUS,NZL)	2	INCLUD.502
82	382145	HOOK BRACKET	1	
83	382144	HOOK	1	
84	996399	HEX. SOCKET HD. BOLT (W/FLANGE) M5X12	3	
85	326276	LEVER (A)	1	
*86	382146	HOUSING (A).(B) SET	1	
87	382142	GEAR BOX	1	
88	361242	ROTOR	1	
89	377925	SENSOR (C)	1	
90	377926	SENSOR HOLDER (C)	2	
91	325241	SEAL LOCK HEX. SOCKET HD. BOLT M3X8	2	
92	382800	NOSE PIECE	1	
93	382136	RUBBER CUSHION (A)	1	
94	382143	SENSOR (B)	1	
95	382807	NAIL FEEDER (B) ASS'Y	1	INCLUD.96-101
96	382463	FEEDER SPRING	1	
97	382170	NAIL FEEDER (B)	1	
98	949496	ROLL PIN D3X16 (10 PCS.)	1	
99	886339	NAIL FEEDER (A)	1	
100	881755	RIBBON SPRING	1	
101	886605	ROLL PIN D2.5X26	1	
102	382806	MAGAZINE COVER SET	1	INCLUD.95,103-106
103	382186	MAGAZINE COVER	1	
104	886341	NAIL RAIL	1	
105	949431	BOLT WASHER M5 (10 PCS.)	2	
106	885997	MACHINE SCREW M5X15 (BLACK)	2	

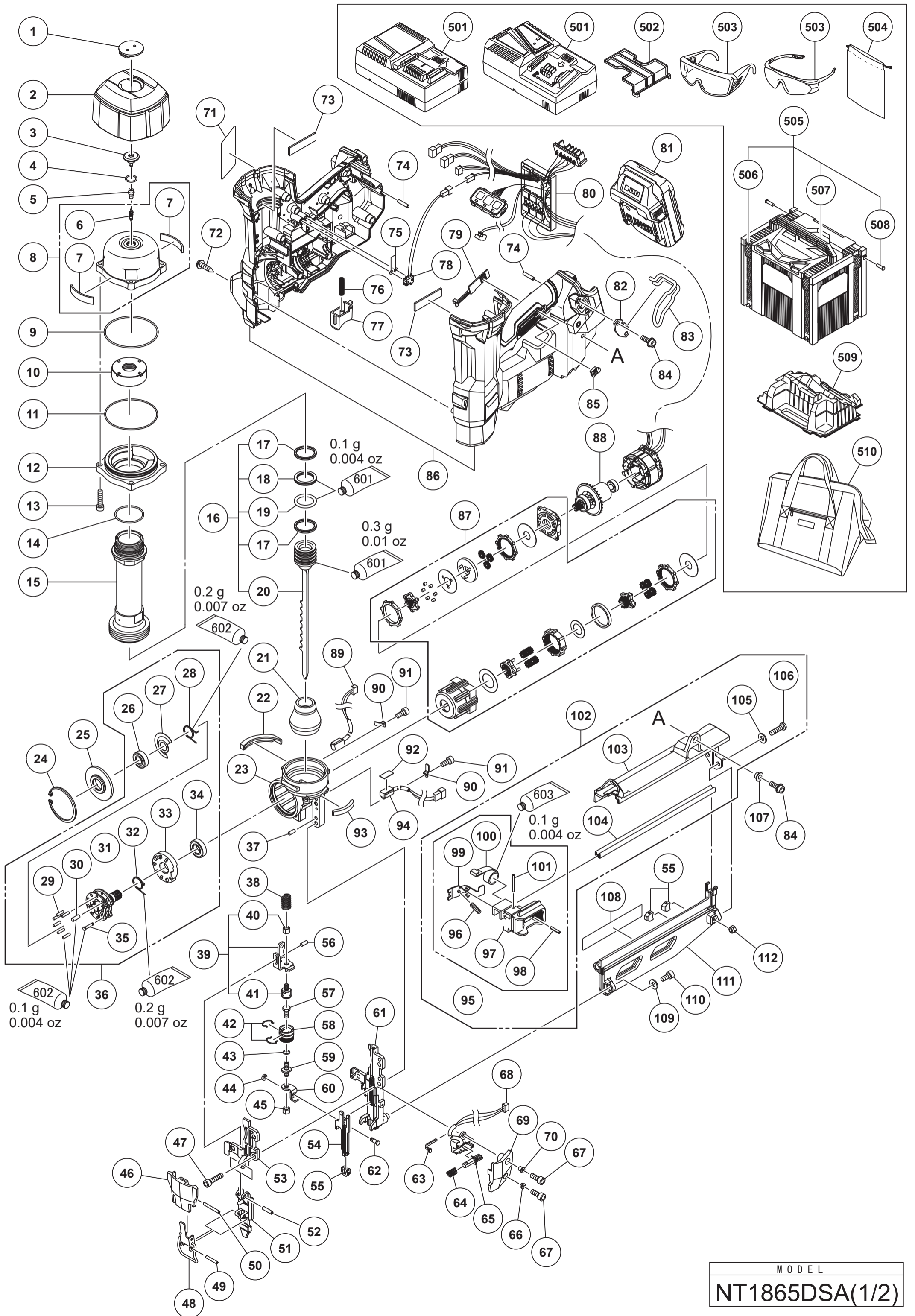
* ALTERNATIVE PARTS

HIKOKI

CORDLESS NAILER NT1865DSA

Item No.	Code No.	Description	No. Used	Remarks
107	371086	DISTANCE PIECE M5	1	
*108	382801	CAUTION LABEL	1	FOR AUS, NZL, USA, CAN
109	323210	BOLT WASHER M4 (BLACK)	1	
110	878614	NYLOCK HEX. SOCKET HD. BOLT M4X8	1	
111	382185	MAGAZINE	1	
112	877371	NYLON NUT M5	2	
		STANDARD ACCESSORIES		
*501		CHARGER (MODEL UC 18YSL3)	1	
502	329897	BATTERY COVER	1	
*503	875769	PROTECTIVE GLASSES	1	
*504	66A2942	TOOL BAG 410X330	1	FOR EUROPE, GBR, AUS, NZL
*505	337528	CASE ASS'Y (STACKABLE 4)	1	INCLUD. 506-508 FOR EUROPE, GBR, AUS, NZL
*506	336472	LATCH	4	FOR EUROPE, GBR, AUS, NZL
*507	336473	HANDLE	1	FOR EUROPE, GBR, AUS, NZL
*508	336474	HINGE	2	FOR EUROPE, GBR, AUS, NZL
*509	382171	INNER TRAY	1	FOR EUROPE, GBR, AUS, NZL
		OPTIONAL ACCESSORIES		
601	372986	GREASE (ISOFLEX TOPAS NB52) 40G	1	
602	325149	GREASE (MOLUB-ALLOY NO.777-1) 75G	1	
603	317918	GREASE (ATTOLUB NO.2) 500G	1	

* ALTERNATIVE PARTS



MODEL
NT1865DSA(1/2)

